

Detroit River International Crossing



Environmental Assessment
Terms of Reference

SUPPORTING DOCUMENTATION

May 2004

Detroit River International Crossing
Environmental Assessment Terms of Reference
Supporting Documentation

- A) Record of Consultation During Preparation of the TOR
- B) Supporting Documentation
 - 1) Canada-U.S.-Ontario-Michigan Border Transportation Partnership Transportation Problems and Opportunities Report (January 2004)
 - 2) The FHWA/NEPA Planning and Approval Process
 - 3) Preliminary Description of Existing Environment and Potential Effects
 - 4) Proposed Factors to Assess Feasibility of the Opportunity Corridors
 - 5) Environmental Components to be Considered During the Generation of Alternatives
 - 6) Criteria for Evaluating Illustrative and Practical Alternatives
 - 7) Typical Elements of Concept Design
 - 8) Federal / Provincial EA Coordination Process
 - 9) Activities Following Approval of the EA

Supporting Documentation

2) THE FHWA/NEPA PLANNING AND APPROVAL PROCESS

2) THE FHWA/NEPA PLANNING AND APPROVAL PROCESS

The Federal Highway Administration (FHWA) and NEPA

NEPA requires, to the fullest extent possible, that the policies, regulations, and laws of the Federal Government be interpreted and administered in accordance with its environmental protection goals. NEPA also requires Federal agencies to use an interdisciplinary approach in planning and decisionmaking for any action that adversely impacts the environment.

NEPA requires and FHWA is committed to the examination and avoidance of potential impacts to the social and natural environment when considering approval of proposed transportation projects. In addition to evaluating the potential environmental effects, we must also take into account the transportation needs of the public in reaching a decision that is in the best overall public interest. The FHWA NEPA project development process is an approach to balanced transportation decision-making that takes into account the potential impacts on the human and natural environment and the public's need for safe and efficient transportation.

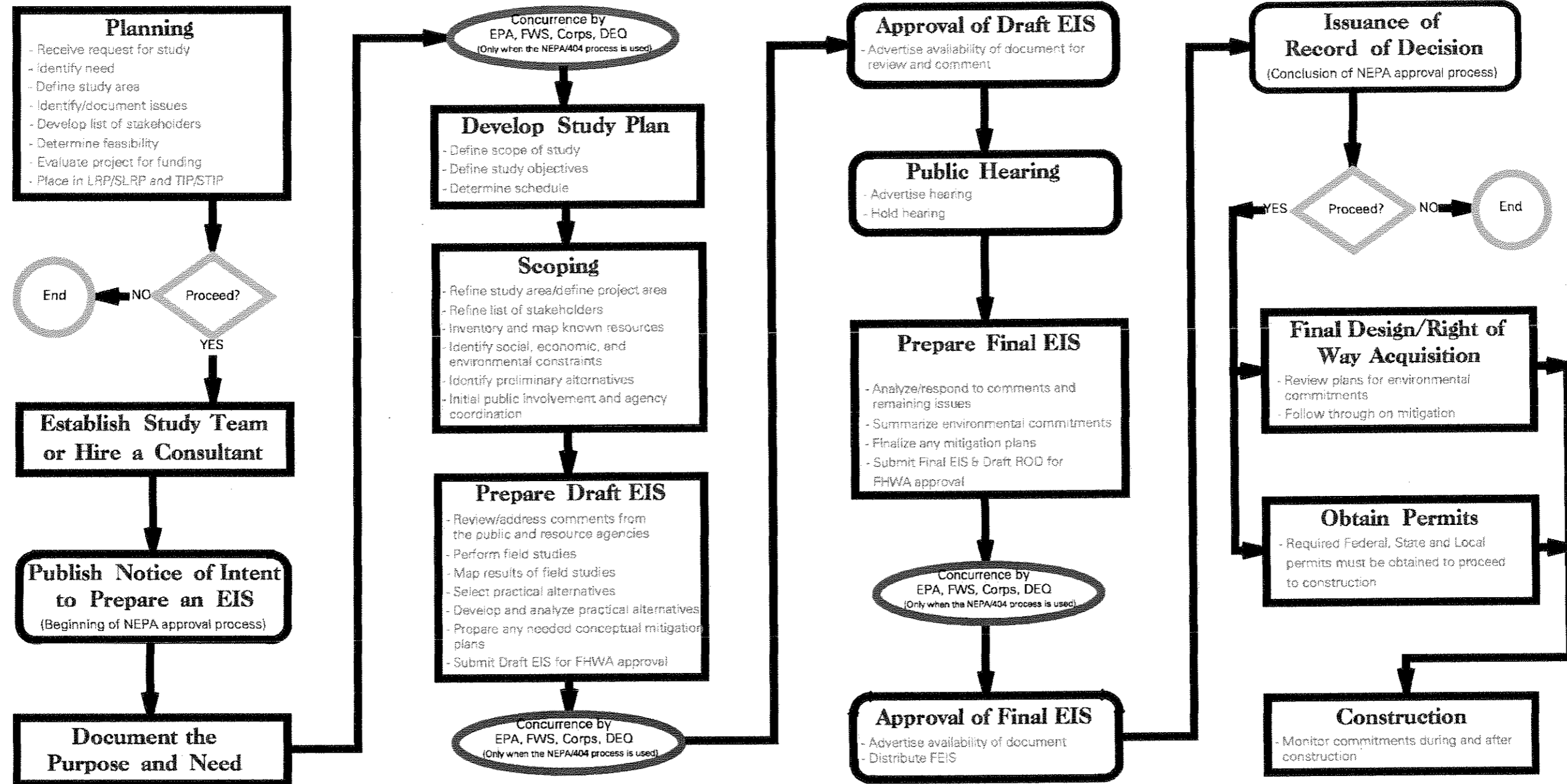
It is FHWA's policy that (23 CFR § 105):

- To the fullest extent possible, all environmental investigations, reviews, and consultations be coordinated as a single process, and compliance with all applicable environmental requirements be reflected in the environmental document required by this regulation.
- Alternative courses of action be evaluated and decisions be made in the best overall public interest based upon a balanced consideration of the need for safe and efficient transportation; of the social, economic, and environmental impacts of the proposed transportation improvement; and of national, state, and local environmental protection goals.
- Public involvement and a systematic interdisciplinary approach be essential parts of the development process for proposed actions.
- Measures necessary to mitigate adverse impacts be incorporated into the action.

The FHWA/NEPA Planning and Approval process used on MDOT projects is illustrated in the following exhibit.

FHWA/MDOT Planning and Approval Process

for Projects Requiring the Preparation of an Environmental Impact Statement



March, 2003