

# The Detroit River International Crossing

## PSAG Meeting August 15, 2007













## The Detroit River International Crossing



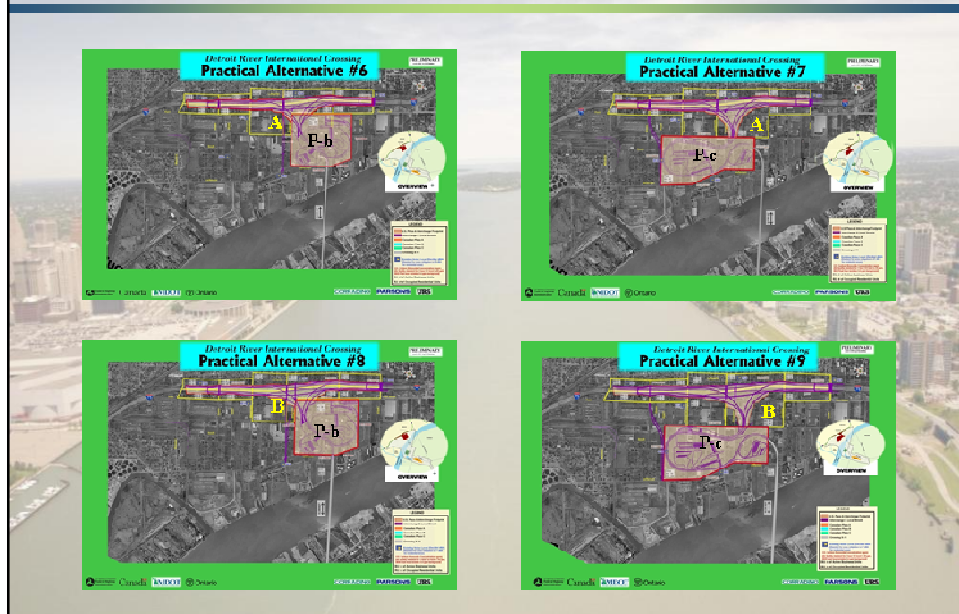
## The Detroit River International Crossing Labeling Nomenclature

Practical Alternative #	Interchange	Plaza	Crossing
1	A	P-a	X-10
2	B	P-a	
3	C	P-a	
4	D	P-a	
5	E	P-a	
6	A	P-b	X-11
7	A	P-c	
8	B	P-b	
9	B	P-c	
10	C	P-b	
11	C	P-c	
12	D	P-b	
13	F	P-d	

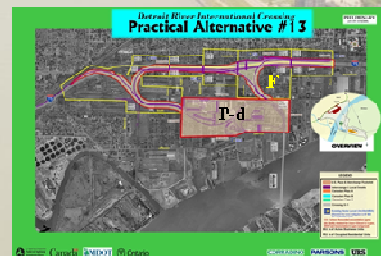
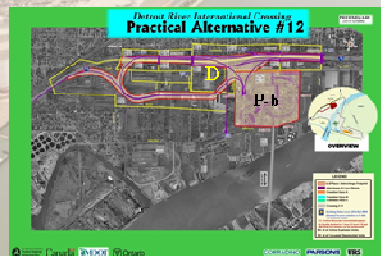
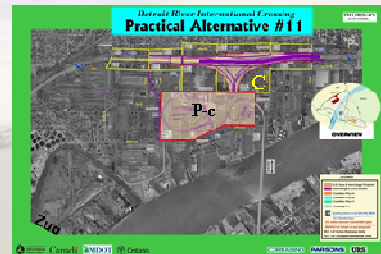
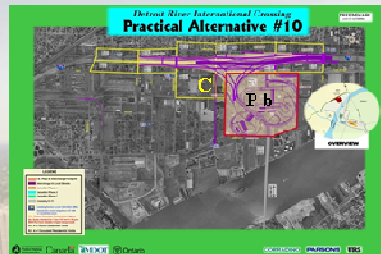
## The Detroit River International Crossing X-10 Crossing Alternatives - #1 through #5



## The Detroit River International Crossing X-11 Crossing Alternatives - #6 through #9



The Detroit River International Crossing  
X-11 Crossing Alternatives - #10 through #13



The Detroit River International Crossing

**Value Analysis/Value Planning  
Study**

Detroit River International Crossing  
DRIC

February 2, 2007




benesch

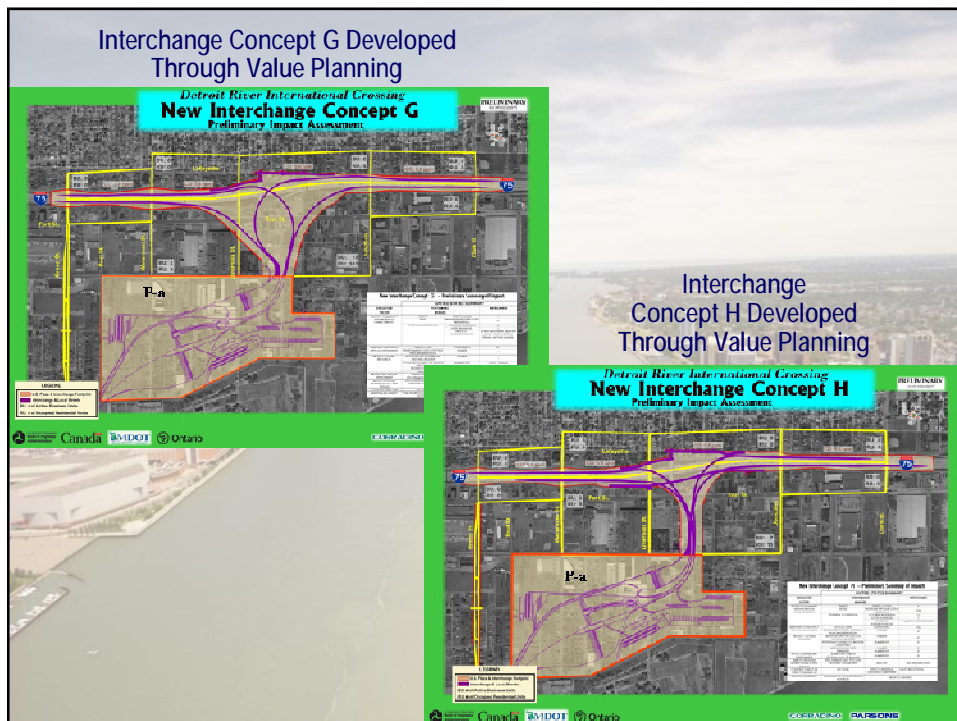


## The Detroit River International Crossing Interchange Value-Planning Rates Summary

Criterion	Interchange A	Interchange B	Interchange C	Interchange D	Interchange E	Interchange F
Performance	3.79	3.61	3.62	3.18	3.42	3.53
Acceptance	3.71	3.59	3.31	2.43	2.70	3.26
Cost	4.60	3.80	4.60	2.30	4.50	3.10

 Below-par evaluation  
Source: Benesch

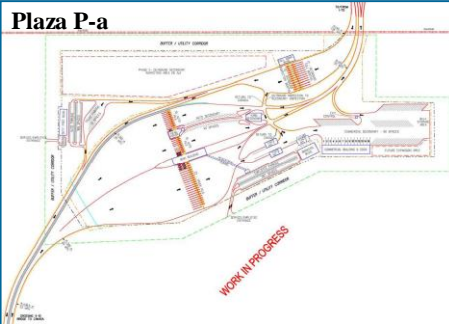
Interchange  
Concept H Developed  
Through Value Planning



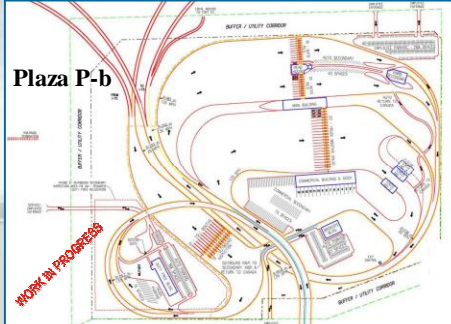


## Alternative Plaza Layouts

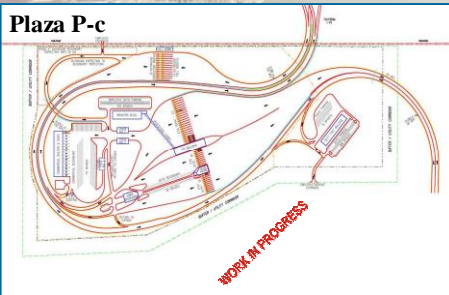
Plaza P-a



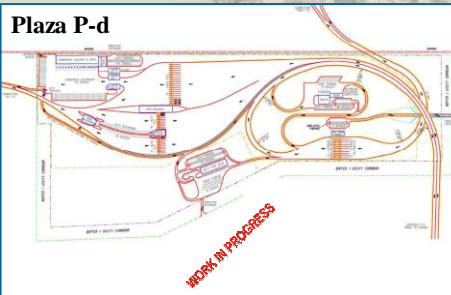
Plaza P-b



Plaza P-c



Plaza P-d



## The Detroit River International Crossing

### Status of Interchanges and Plazas following Value Planning, GSA/CBP and Public Input

Alternative	Interchange	Plaza	Crossing	Proposed Status
#1	A	P-a	X-10	Retain for future analysis
#2	B	P-a		Retain for future analysis
#3	C	P-a		Retain for future analysis
<del>#4</del>	<del>D</del> <sup>1,2</sup>	P-a		Eliminate from further analysis <sup>1,2</sup>
#5	E	P-a		Retain for future analysis
<del>#6</del>	A	<del>P-b</del> <sup>3,4</sup>	X-11	Eliminate from further analysis <sup>3,4</sup>
#7	A	P-c		Retain for future analysis
<del>#8</del>	B	<del>P-b</del> <sup>3,4</sup>		Eliminate from further analysis <sup>3,4</sup>
#9	B	P-c		Retain for future analysis
<del>#10</del>	C	<del>P-b</del> <sup>3,4</sup>		Eliminate from further analysis <sup>3,4</sup>
#11	C	P-c	X-10	Retain for future analysis
<del>#12</del>	<del>D</del> <sup>1,2</sup>	<del>P-b</del> <sup>3,4</sup>		Eliminate from further analysis <sup>1,2,3,4</sup>
<del>#13</del>	<del>D</del> <sup>1</sup>	<del>P-b</del> <sup>4</sup>		Eliminate from further analysis <sup>1,4</sup>
#14	G	P-a	X-10	Retain for future analysis
<del>#15</del>	<del>H</del> <sup>2</sup>	P-a	X-10	Eliminate from further analysis <sup>2</sup>

<sup>1</sup>Unacceptable community impacts.

<sup>2</sup>Unacceptable engineering impacts.

<sup>3</sup>Unacceptable impacts on Fort Wayne due to proposed utility placement.

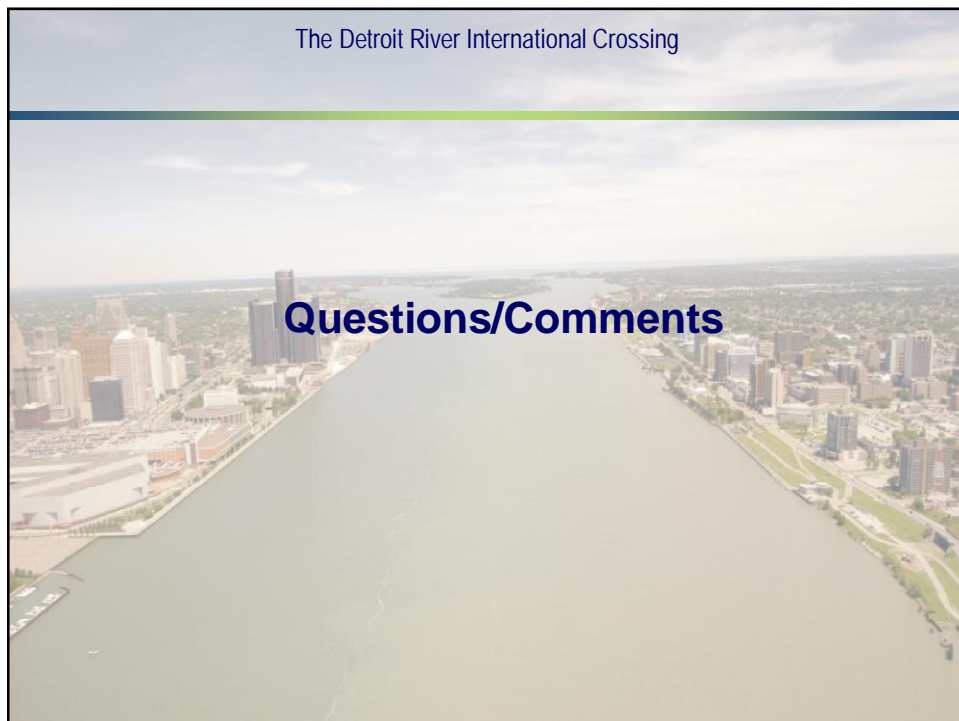
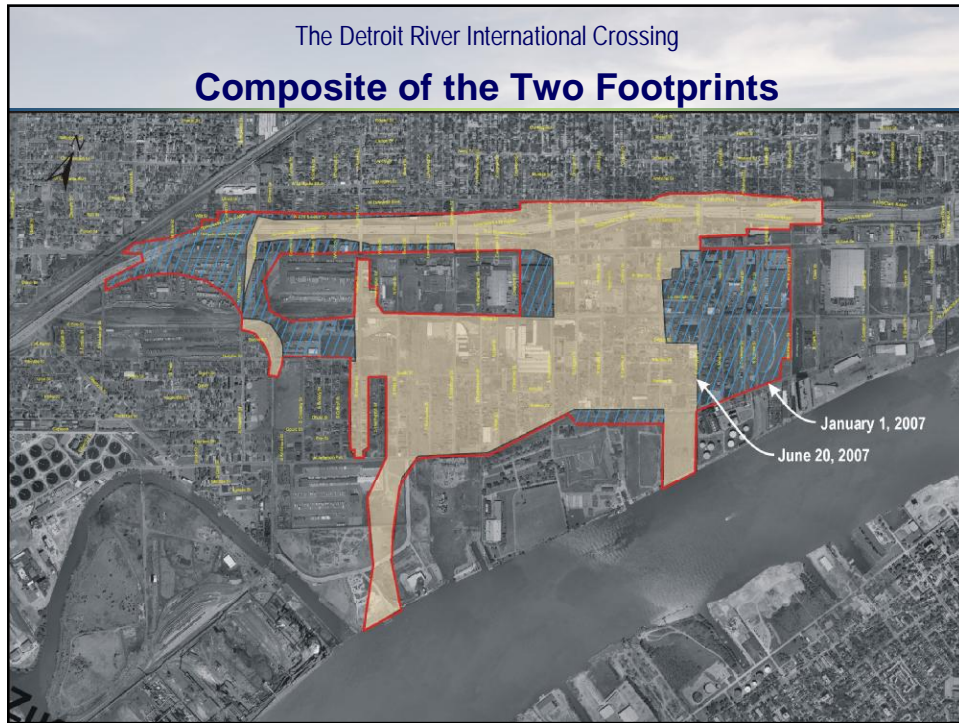
<sup>4</sup>Unacceptable impacts as judged by U.S. General Services Administration/Customs and Border Protection Agency input.

## The Detroit River International Crossing X-10 Crossing Alternatives - #1, #2, #3 and #5



## The Detroit River International Crossing X-11 Crossing Alternatives - #7, #9, #11 and G (#14)







The Detroit River International Crossing

**Thank You**