

DETROIT RIVER INTERNATIONAL CROSSING ENVIRONMENTAL ASSESSMENT

*Public Information Open House #2
Workshop-Plazas*

February 9th, 2006

Meeting Outline

1. Opening Remarks
2. Update on Development of Practical Route Alternatives
3. Group Discussion
4. Next Steps
5. Closing Remarks

Getting and Giving the Most

- It's OUR meeting...participate enthusiastically
- Terminology expertise is secondary
- There is such a thing as a bad idea!
- Build, don't duplicate
- Respect (for each other and the process)
- Voices without titles
- Consensus on no consensus
- Informal style, structured approach

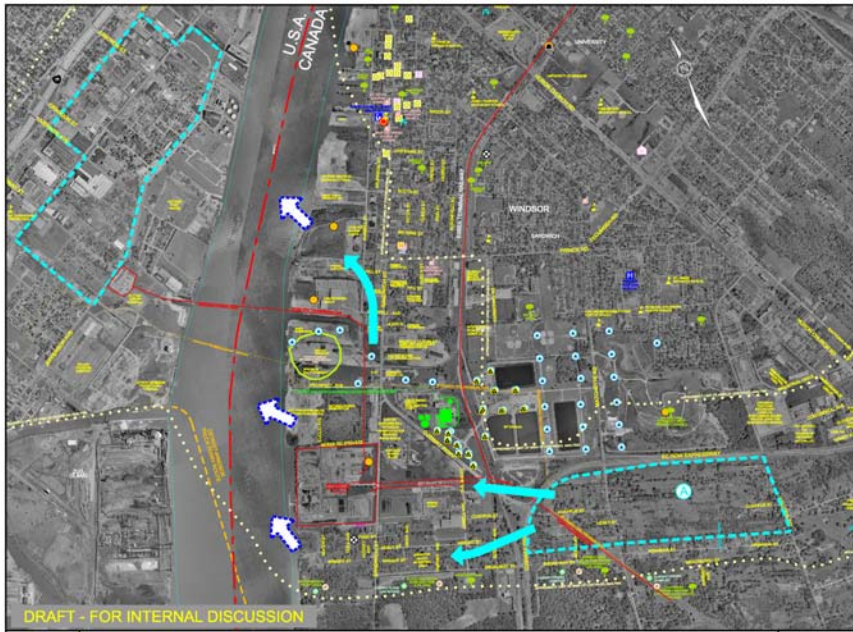
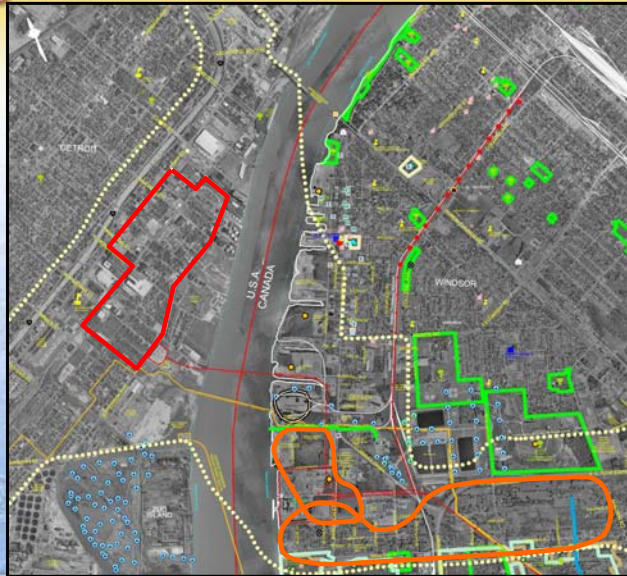
Key Milestones

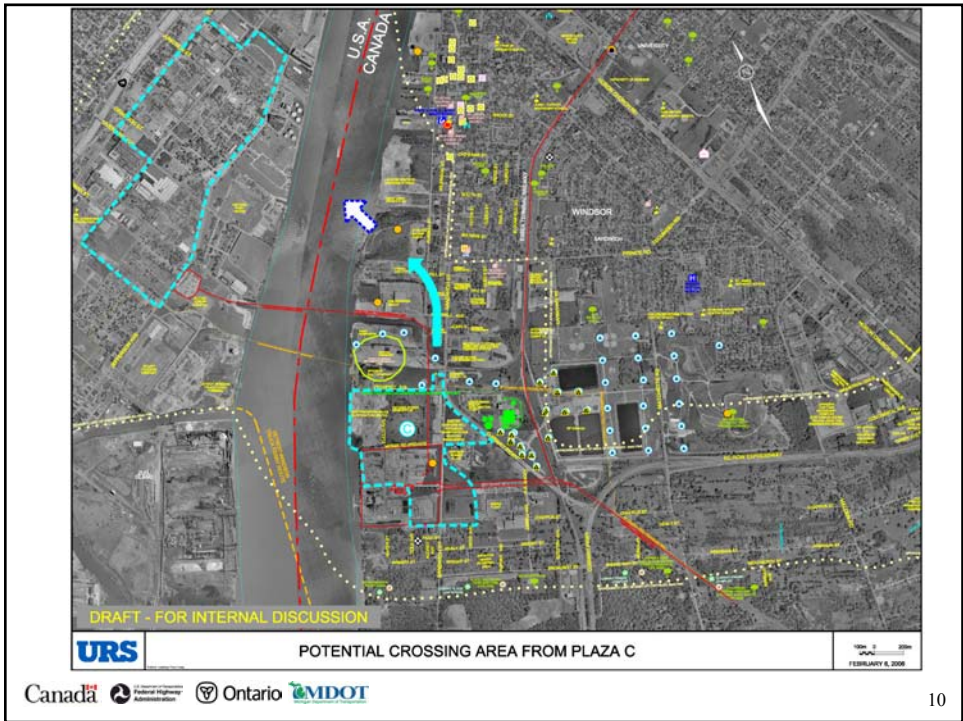
Study Area Features, Opportunities & Constraints	April '05	Initial Public Outreach
Initial Set of Crossing Alternatives, Plaza Locations & Connecting Routes in Canada and the U.S.	June '05	PIOH1
Final Set of Alternatives	December '05	PIOH2
Specific Crossing, Plaza and Access Road Options	March '06	PIOH3
Results of Social, Economic, Environmental and Engineering Assessments	Winter '06	PIOH4
Preferred Crossing Location, Plaza Locations & Connecting Routes in Canada and the U.S.	Spring '07	PIOH5
Finalize Engineering and Mitigation Measures	Summer '07	PIOH6
Document Study and Submit for Approvals	End of '07	Public Review

Update of Development of Practical Plaza and Crossing Alternatives

Questions to Consider

1. Are there other plaza and crossing alternatives that should be considered, and if so, what are they?
2. In addition to the factors that the Project Team will be looking at in assessing the Practical Alternatives for plazas and crossings, are there other impacts or opportunities the team should be assessing in the evaluation?
3. What should the Project Team incorporate in the design of the plaza and crossing to improve its look and aesthetics and have it blend more seamlessly into the community?





1. Changes in Air Quality
2. Protect Community and Neighbourhood Characteristics
3. Maintain Consistency with Existing and Planned Land Use
4. Protect Cultural Resources
5. Protect the Natural Environment
6. Improve Regional Mobility
7. Minimize Cost

1. Are there other plaza and crossing alternatives that should be considered, and if so, what are they?

2. In addition to the factors that the Project Team will be looking at in assessing the Practical Alternatives for plazas and crossings, are there other impacts or opportunities the team should be assessing in the evaluation?

3. What should the Project Team incorporate in the design of the plaza and crossing to improve its look and aesthetics and have it blend more seamlessly into the community?

Next Steps

Next Steps

- Active and on-going consultation is proposed throughout the project
- February '06 – Development of Practical Alternatives
 - Question and Answer Session
 - Workshops
 - Other Meetings – February 21, 2006 at Ciaciario
- March '06 - Practical Crossing, Plaza and Connecting Route Alternatives
 - PIOH 3 (Dates to be confirmed)
- Spring/Summer '06 - Design Workshops/Input to Analysis
- Dec. '06 - Analysis of Practical Alternatives
 - PIOH 4 and Workshops
- Spring '07 - Selection of Technically and Environmentally Preferred
 - PIOH and Workshops

Closing Remarks

Canadian Project Team

**Ministry of Transportation
Windsor Border Initiatives
Implementation Group**

949 McDougall Street, Suite 200, Windsor
Detroit.River@mto.gov.on.ca

Mr. Dave Wake
Manager, Planning
Tel. 519-873-4559

Mr. Roger Ward
Senior Project Manager
Tel. 519-873-4586

**URS Canada Inc.
DRIC Project Office**

2465 McDougall Street, Suite 100, Windsor
info@partnershipborderstudy.com

Mr. Murray Thompson
Project Manager
Tel. 905-882-4401

Mr. Len Kozachuk
Deputy Project Manager
Tel. 905-882-3540

Project Web Site: www.partnershipborderstudy.com
Toll Free : 1-800-900-2649