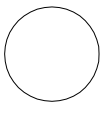


APPENDIX C

Typical Cross Sections for Access Road Practical Alternatives

METRIC

PLATE No
CONT No XXXX-XXXX
WP No XXX-XX-XX

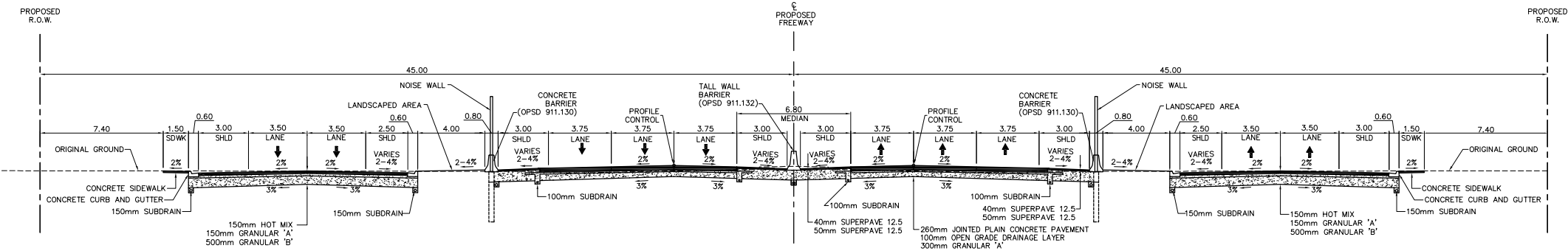


TYPICAL SECTIONS
Survey _____ Revised _____

SHEET
XXX

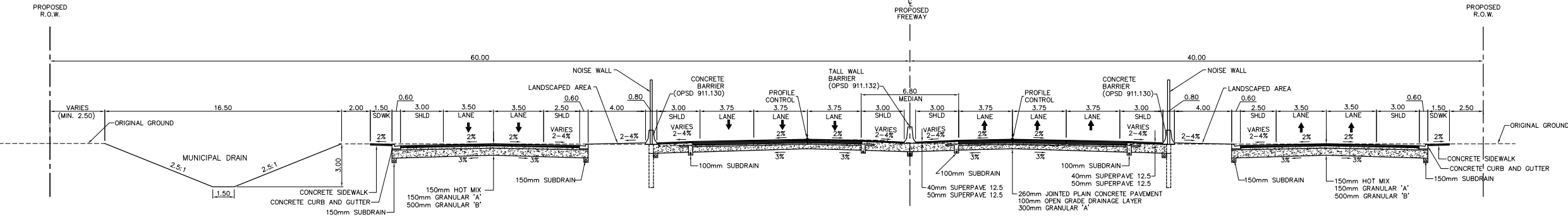
DETROIT RIVER INTERNATIONAL CROSSING
HIGHWAY 3/TALBOT ROAD/HURON CHURCH ROAD CORRIDOR

TYPICAL 6-LANE URBAN FREEWAY SECTION WITH 2-LANE SERVICE ROADS ON BOTH SIDES



CONCEPTUAL

TYPICAL 6-LANE URBAN FREEWAY SECTION WITH 2-LANE SERVICE ROADS ON BOTH SIDES WITH MUNICIPAL DRAIN



ALTERNATIVE 1A

SCALE




PLATE No
CONT No XXXX-XXXX
WP No XXX-XX-XX

SHEET
XXX

TYPICAL BELOW-GRADE 6-LANE URBAN FREEWAY SECTION WITH ONE-WAY SERVICE ROADS



SCALE

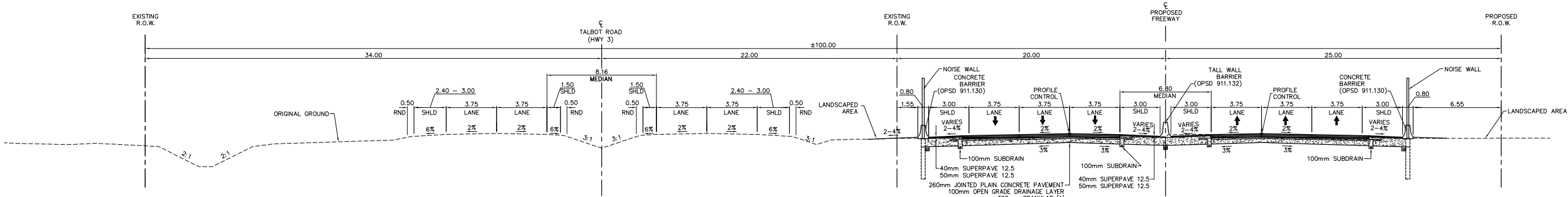


1.5m 0 3.0m

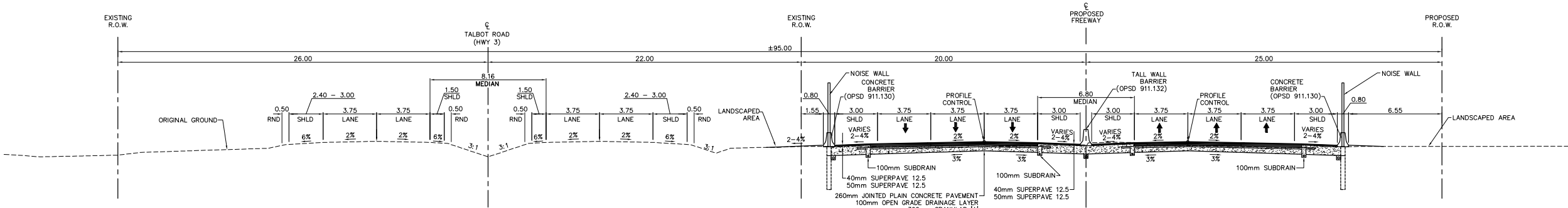
Horizontal

DETROIT RIVER INTERNATIONAL CROSSING
HIGHWAY 3/TALBOT ROAD/HURON CHURCH ROAD CORRIDOR

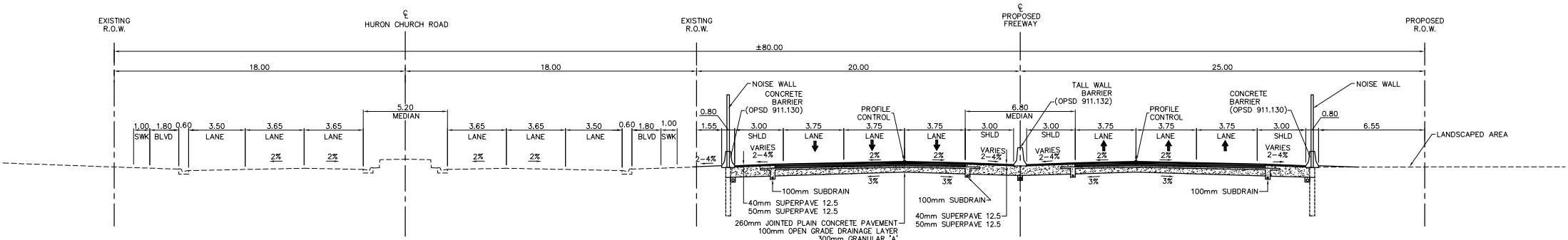
TYPICAL 6-LANE URBAN FREEWAY SECTION ADJACENT TO TALBOT ROAD
NOISE BARRIER ON NORTH SIDE WITH NO SERVICE ROAD ON SOUTH SIDE OF URBAN FREEWAY



TYPICAL 6-LANE URBAN FREEWAY SECTION ADJACENT TO TALBOT ROAD
NOISE BARRIER ON NORTH SIDE WITH NO SERVICE ROAD ON SOUTH SIDE OF URBAN FREEWAY



TYPICAL 6-LANE URBAN FREEWAY SECTION ADJACENT TO HURON CHURCH ROAD
NOISE BARRIER ON NORTH SIDE WITH NO SERVICE ROAD ON SOUTH SIDE OF URBAN FREEWAY



ALTERNATIVE 2A

CONCEPTUAL

SCALE



PLATE	No
CONT	No XXXX-XXXX
WP	No XXX-XX-XX
TYPICAL SECTIONS	
Survey	Revised

[illegible][illegible][illegible]

500mm GRANULAR B

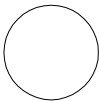
CONCEPTUAL

A horizontal beam of total length 5m is shown. A section of the beam, 3.0m long, is highlighted with a dashed pattern. The label 'Horizontal' is written below the beam.

DETROIT RIVER INTERNATIONAL CROSSING
HIGHWAY 3/TALBOT ROAD/HURON CHURCH ROAD CORRIDOR

METRIC

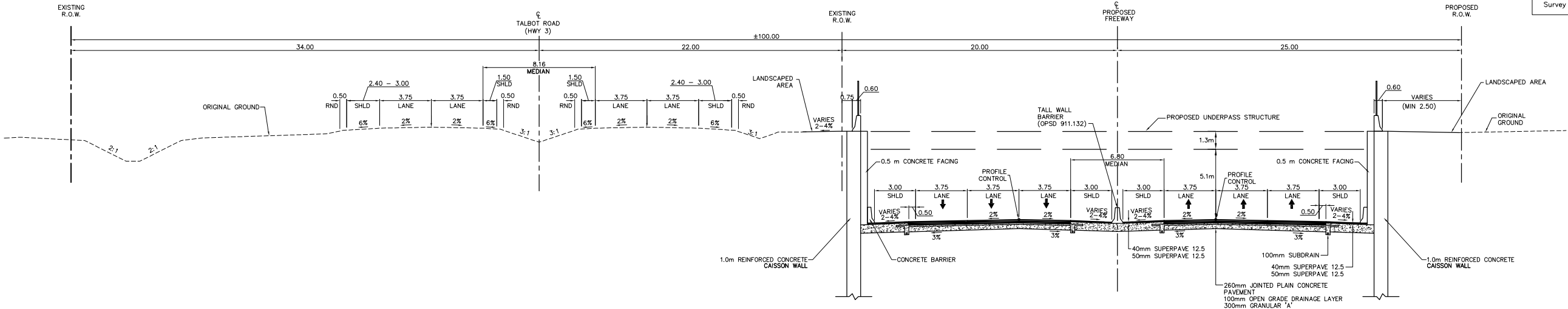
PLATE No
CONT No XXXX-XXXX
WP No XXX-XX-XX



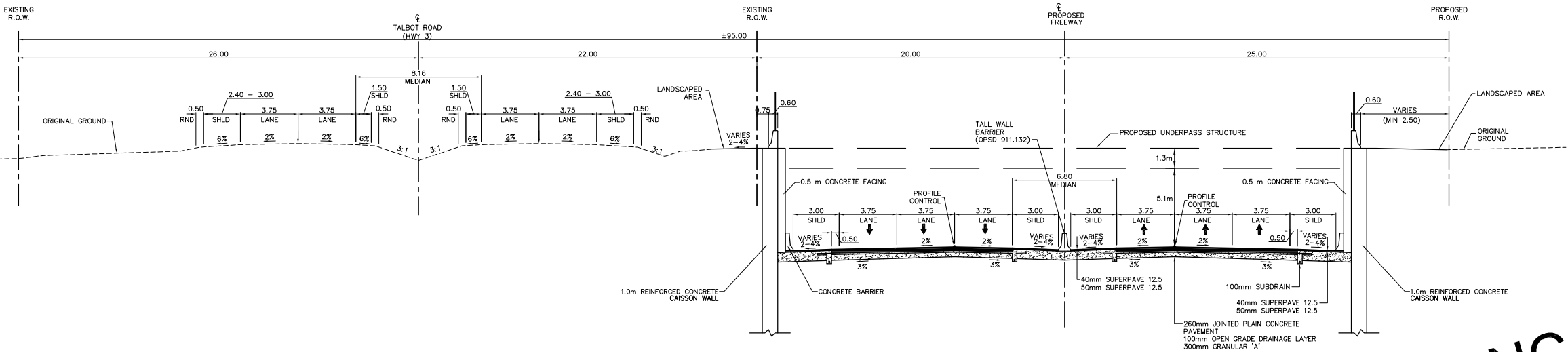
TYPICAL SECTIONS

SHEET
XXX

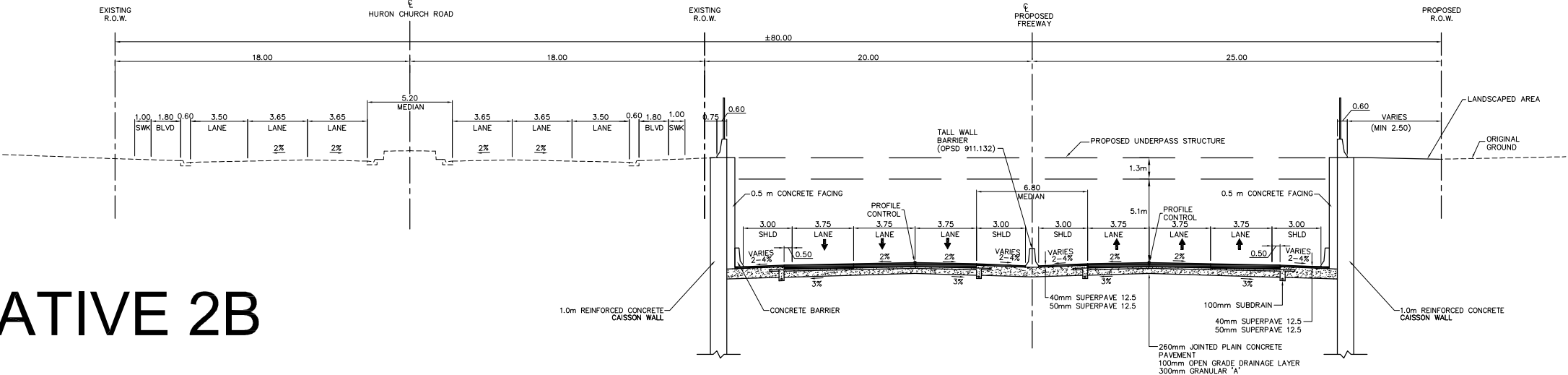
TYPICAL BELOW GRADE 6-LANE URBAN FREEWAY SECTION ADJACENT TO TALBOT ROAD
NOISE BARRIER ON NORTH SIDE WITH NO SERVICE ROAD ON SOUTH SIDE OF URBAN FREEWAY



TYPICAL BELOW GRADE 6-LANE URBAN FREEWAY SECTION ADJACENT TO TALBOT ROAD
NOISE BARRIER ON NORTH SIDE WITH NO SERVICE ROAD ON SOUTH SIDE OF URBAN FREEWAY



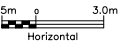
TYPICAL BELOW GRADE 6-LANE URBAN FREEWAY SECTION ADJACENT TO TALBOT ROAD
NOISE BARRIER ON NORTH SIDE WITH NO SERVICE ROAD ON SOUTH SIDE OF URBAN FREEWAY



CONCEPTUAL

ALTERNATIVE 2B

SCALE



DETROIT RIVER INTERNATIONAL CROSSING
HIGHWAY 3/TALBOT ROAD/HURON CHURCH ROAD CORRIDOR

METRIC

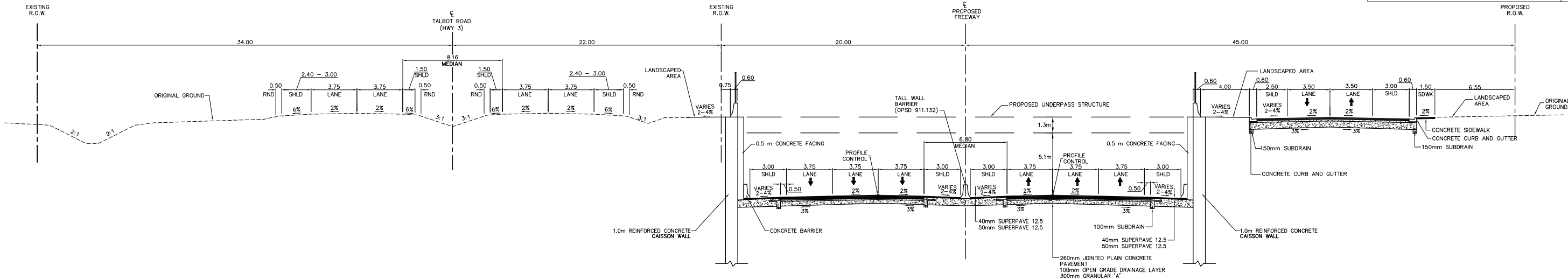
PLATE No
CONT No XXXX-XXXX
WP No XXX-XX-XX



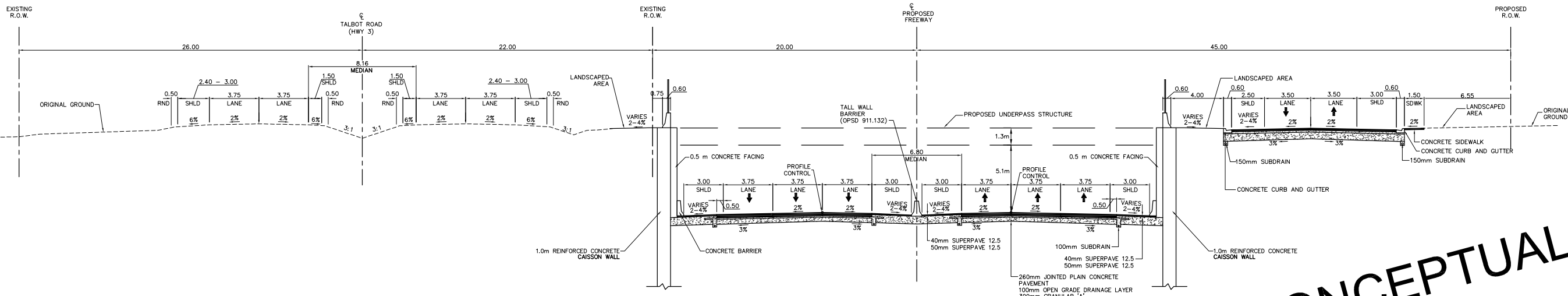
TYPICAL SECTIONS

SHEET
XXX

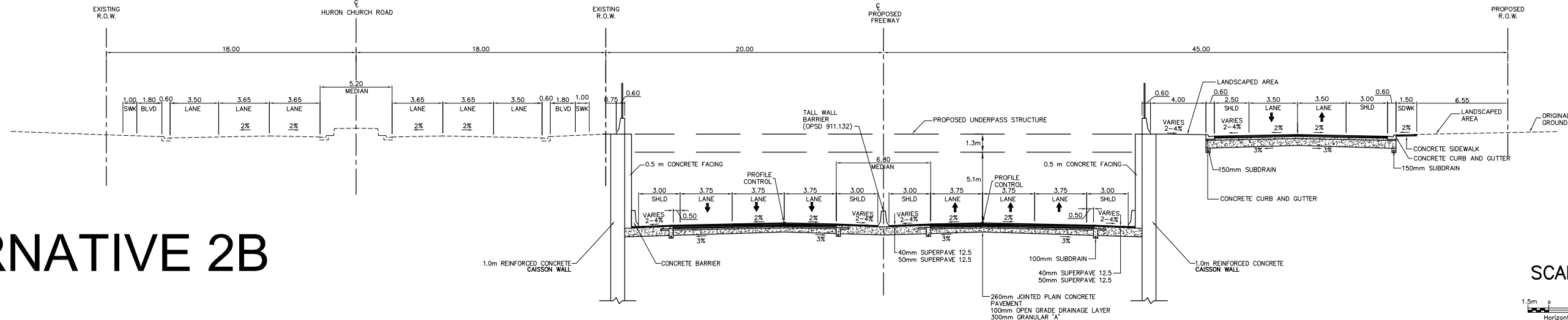
TYPICAL BELOW GRADE 6-LANE URBAN FREEWAY SECTION ADJACENT TO TALBOT ROAD
WITH TWO-WAY SERVICE ROAD ON SOUTH SIDE OF URBAN FREEWAY



TYPICAL BELOW GRADE 6-LANE URBAN FREEWAY SECTION ADJACENT TO TALBOT ROAD
WITH TWO-WAY SERVICE ROAD ON SOUTH SIDE OF URBAN FREEWAY



TYPICAL BELOW GRADE 6-LANE URBAN FREEWAY SECTION ADJACENT TO HURON CHURCH ROAD
WITH TWO-WAY SERVICE ROAD ON SOUTH SIDE OF URBAN FREEWAY



ALTERNATIVE 2B

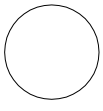
CONCEPTUAL

SCALE



METRIC

PLATE No
CONT No XXXX-XXXX
WP No XXX-XX-XX

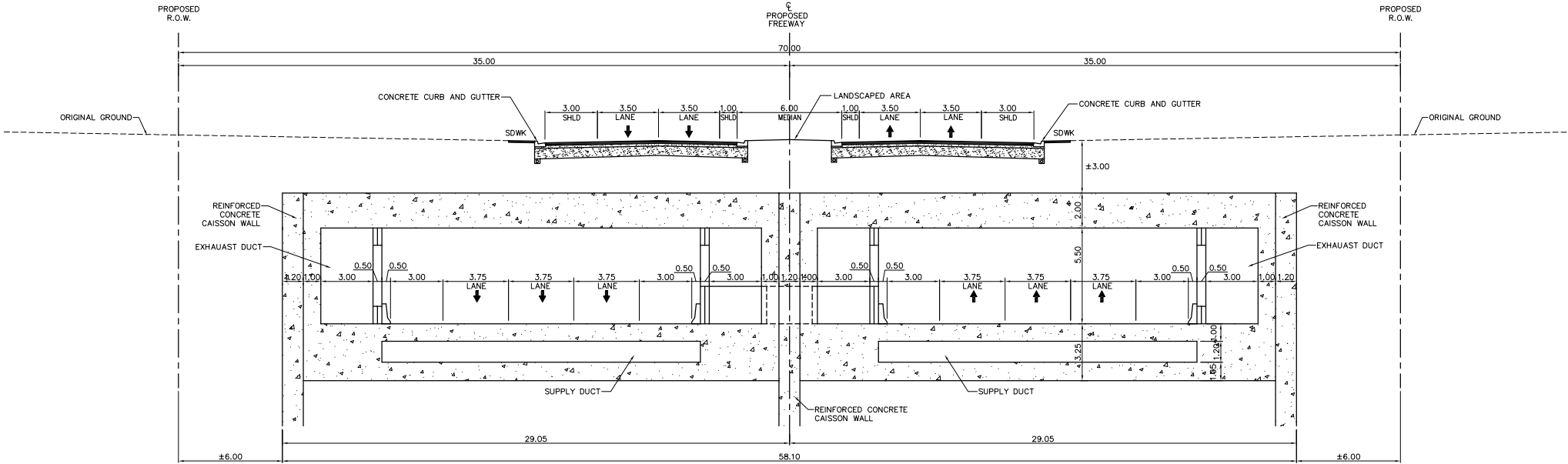


TYPICAL SECTIONS
Survey _____ Revised _____

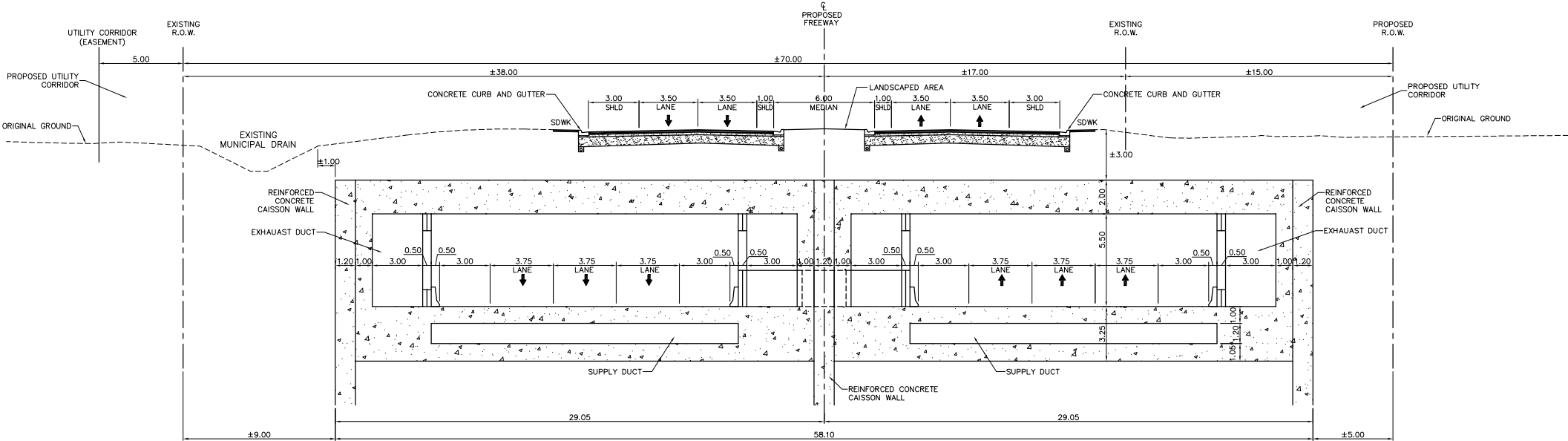
SHEET
XXX

DETROIT RIVER INTERNATIONAL CROSSING
HIGHWAY 3/TALBOT ROAD/HURON CHURCH ROAD CORRIDOR

CUT AND COVER TUNNEL SECTION



CUT AND COVER TUNNEL SECTION WITH MUNICIPAL DRAIN



CONCEPTUAL

ALTERNATIVE 3

SCALE



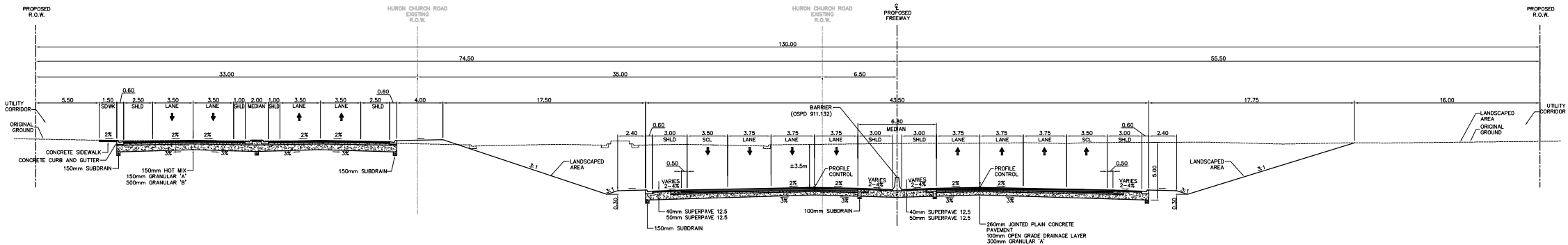
DETROIT RIVER INTERNATIONAL CROSSING
HURON CHURCH ROAD CORRIDOR

METRIC

PLATE No
CONT No XXXX-XXXX
WP No XXX-XX-XX

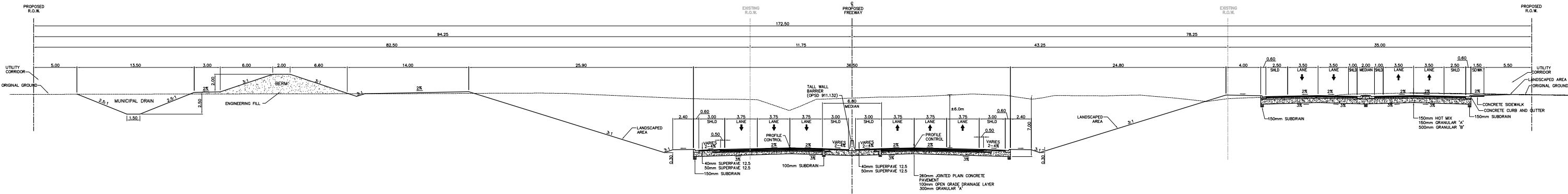
SHEET
XXX

TYPICAL BELOW-GRADE 6-LANE URBAN FREEWAY SECTION INCLUDING SPEED CHANGE LANES
WITH TWO-WAY SERVICE ROADS ON ONE SIDE

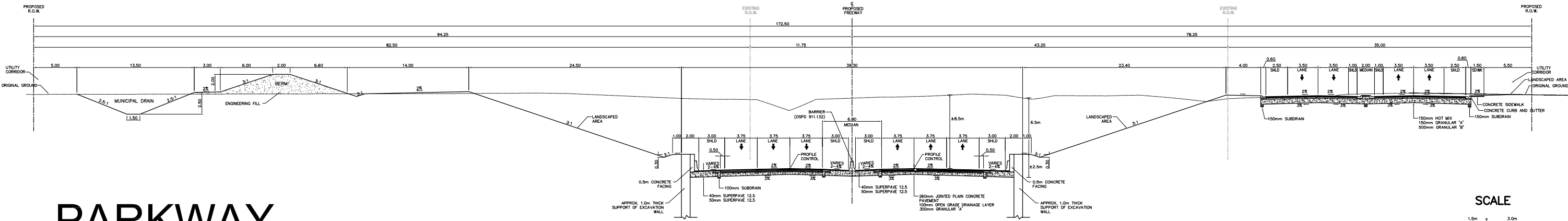


DETROIT RIVER INTERNATIONAL CROSSING
HIGHWAY 3/TALBOT ROAD CORRIDOR

TYPICAL BELOW-GRADE 6-LANE URBAN FREEWAY SECTION
TWO-WAY SERVICE ROAD ON SOUTH SIDE WITH MUNICIPAL DRAIN AND BERM ON NORTH SIDE
MAXIMUM DEPTH OF EXCAVATION (7m) WITHOUT SUPPORT OF EXCAVATION WALLS



TYPICAL BELOW-GRADE 6-LANE URBAN FREEWAY SECTION
TWO-WAY SERVICE ROAD ON SOUTH SIDE WITH MUNICIPAL DRAIN AND BERM ON NORTH SIDE
MAXIMUM DEPTH OF EXCAVATION (9m) WITH SUPPORT OF EXCAVATION WALLS



PARKWAY

SCALE

1:2m
Horizontal