

DETROIT RIVER INTERNATIONAL CROSSING STUDY

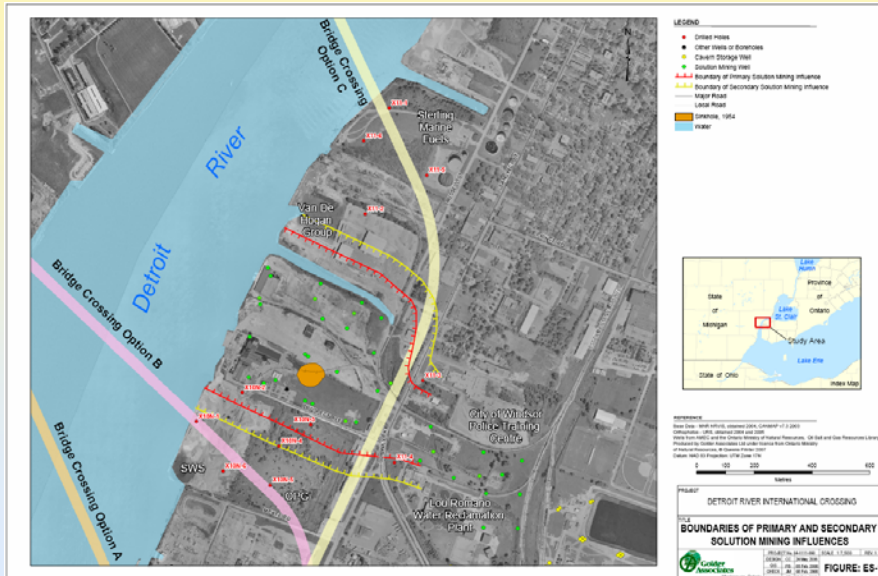
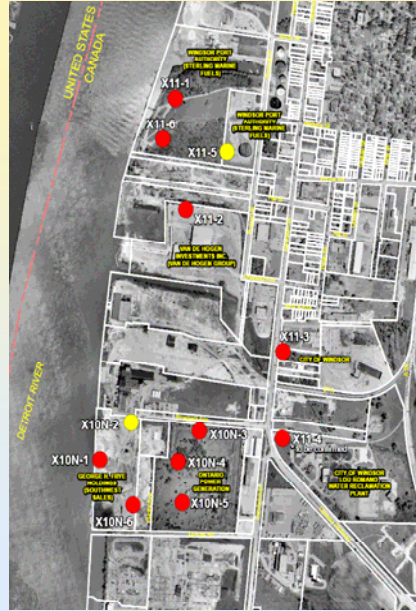
Private Sector Advisory Group Meeting

March 19, 2008

- Introductions
- Overview of Study Status
- Canadian Update
- U.S. DEIS
- Wrap-Up

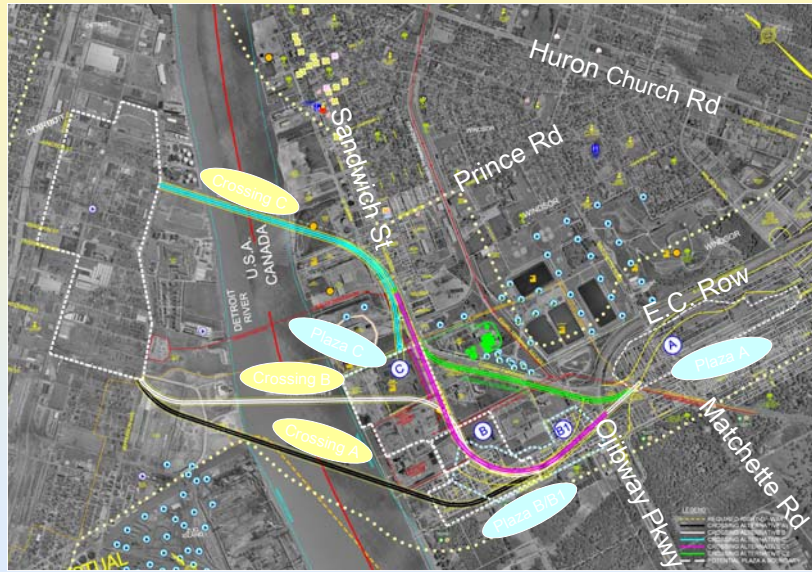
Environmental Assessment Key Study Activities	
Identify Study Area Features, Opportunities & Constraints	✓
Develop Initial Set of Crossing Alternatives, Plaza Locations & Connecting Routes in Canada and the U.S.	✓
Define Area of Continued Analysis	✓
Present Specific Crossing, Plaza and Access Road Options	✓
Complete Social, Economic, Environmental and Engineering Assessments	
Identify Preferred Crossing Location, Plaza Locations & Connecting Routes in Canada and the U.S.	Spring 2008
Finalize Engineering and Mitigation Measures	Summer/ Fall 2008
Document Study and Submit for Approvals	Fall 2008

Canadian Update

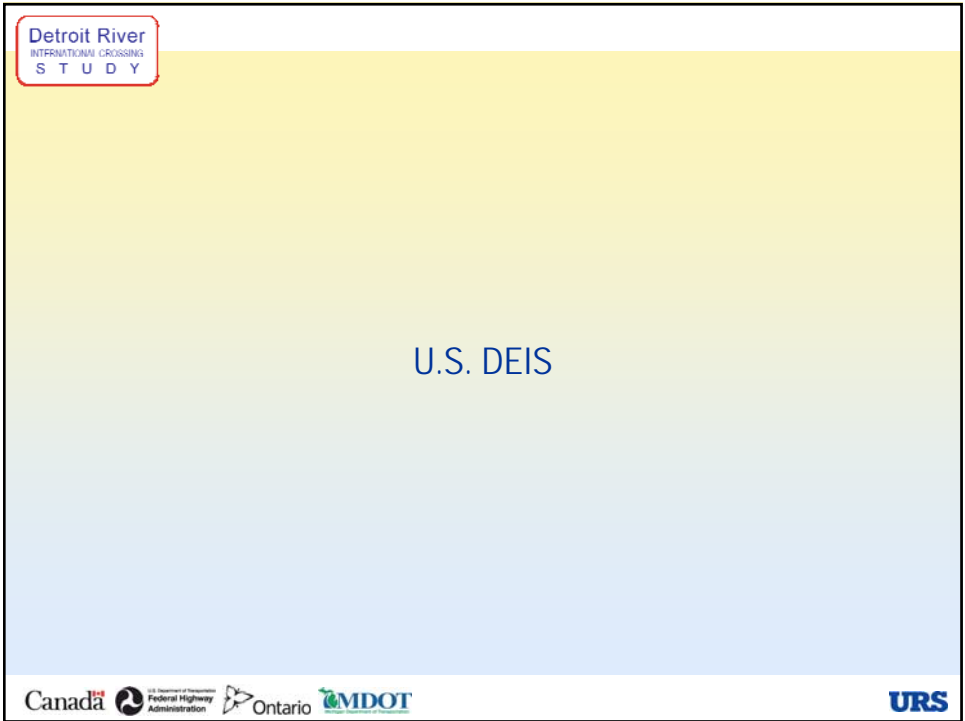


- Crossing A outside the Limits of Primary and Secondary Solution Mining Influence
- Crossing B outside the Limits of Primary and Secondary Solution Mining Influence

- Crossing C main bridge pier locations outside the Limits of Primary and Secondary Solution Mining Influence
 - Proposed approach passes over former solution mining well field
 - Brine-filled cavity, rubble zone, and distributed rock mass
 - "Might experience subsidence ranging up to values on the order of 2m"
 - Additional study... "may still be insufficient to consider supporting structures on the rock within and adjacent to the identified limits of solution mining influence within an acceptable degree of risk."



- Reviewing input received
- Incorporating into refinements
- Completing technical and environmental analyses of Parkway to same level as other options
- Complete evaluations and recommend TEPA in Spring 2008



Detroit River International Crossing Study

The Business
of
Borders

Detroit River International Crossing Study

Keep Michigan Competitive !!

DRIC is a Bi-national Undertaking

The Border Transportation Partnership



Cooperating Federal Agencies—U.S.

- Federal Highway Administration
- U.S. Environmental Protection Agency
- U.S. General Services Administration
- U.S. Department of Homeland Security
- U.S. Army Corps of Engineers
- U.S. Fish & Wildlife Service
- U.S. Coast Guard
- U.S. Department of State



Existing Detroit River International Crossings



What is the “Detroit River International Crossing Study” ?

- DRIC (Detroit River International Crossing) is a study to determine the appropriate type and location of a possible new crossing, as well as connections to an interstate freeway in the U.S. and Highway 401 in Ontario, Canada.



What is the “Detroit International Bridge Company Enhancement Proposal”

- **Ambassador Bridge Company seeking environmental clearance for a replacement bridge (U.S. and Canada).**
 - ✓ Private construction and operation
 - ✓ Private ownership and control
 - ✓ Funded largely or totally through tolls



What is the “Gateway Project”?

- The Gateway Project will build new connections from the Ambassador Bridge plaza to I-75.

Purpose of DRIC Project

- **To provide safe, efficient and secure movements of people and goods across the U.S.-Canadian border in order to support the economies of Michigan, Ontario, Canada and the U.S. and,**
- **To support the mobility needs of national and civil defense to protect the homeland.**

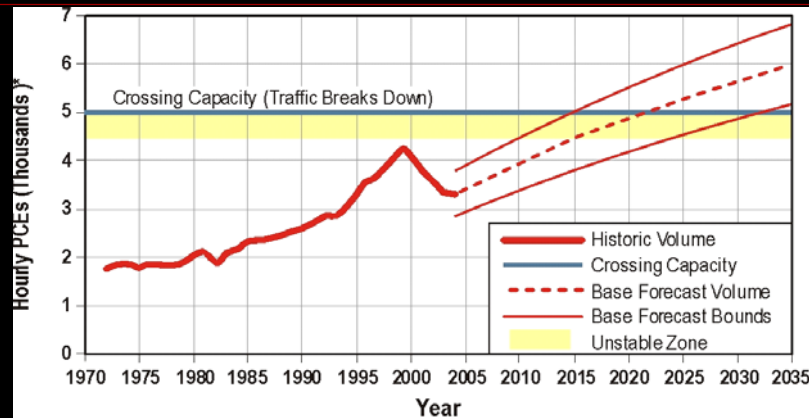
Need for Project

- **Capacity**
- **System connectivity**
- **Processing capability**
- **Reasonable and secure crossing options**

Forecasts Indicate by the year 2035 that...

- **Car traffic is expected to increase by 57%**
- **Truck traffic is expected to increase by 128%**
 - ✓ We'll outgrow the connecting roads and the border plazas first

*Travel Demand vs. Capacity:
Combined Detroit River Crossings*



* PCE = Passenger Car Equivalents (i.e. trucks are converted to an equivalent number of cars)
Source: IBI Group
Preliminary - for Discussion Purposes Only

Existing Detroit River International Crossings



Area of Analysis for Crossing System



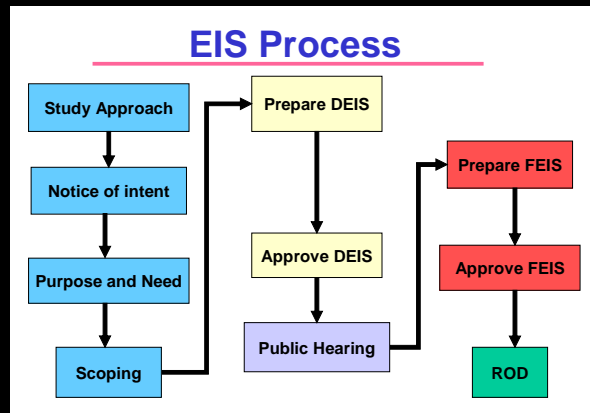




Practical Alternatives

- Nine Build Alternatives
- One No-Build Alternative

Where we are at in the EIS Process...



This presentation is about

The Detroit River International Crossing Study

Draft Environmental Impact Statement

A Preferred Alternative Has Not Been Chosen



Detroit River International Crossing

Examples of Impacts

General Categories of Impacts

- Environmental
- Social
- Economic

Detroit River International Crossing

Who would have to move?

Detroit River International Crossing

- No one would have to move if nothing is done. But, the Delray community would continue to lose housing.

Delray Area



Delray Area



Expected Relocations with DRIC

- Between 324 and 414 Dwellings, including 2 apartment buildings with a total of 100 dwelling units
- Between 41 and 56 businesses

What about jobs and taxes?



Forecast of Permanent Jobs without DRIC

- **Further loss of jobs statewide and regionally**
- **More abandoned industrial sites**

Forecast of Permanent Jobs with DRIC

- **Would attract about 25,000 jobs statewide in one year alone because additional border capacity will support basic industries which depend on it to sell their products**
- **Would add 3,350 new jobs in Southeast Michigan just due to enhanced accessibility provided by another crossing**

Forecast of Construction Jobs with DRIC

- Create up to 10,400 construction jobs
- Add up to 27,000 indirect jobs

Detroit River International Crossing

What about traffic ?

Detroit River International Crossing

- **If nothing is done, traffic in the local area will grow slowly on major roads, like I-75.**
- **Traffic in the Mexicantown area should improve with the Gateway Project.**
- **With a new bridge, traffic will be handled better than with only the existing crossings**

Detroit River International Crossing

Air quality will improve.

Summary of Impacts with No Build Alternative

- **No one would have to move if nothing is done. But, the Delray community would likely continue to lose housing.**
- **Further loss of jobs statewide and regionally**
- **More abandoned industrial sites**
- **Less traffic congestion and noise and better air quality in Mexicantown when the Ambassador Gateway Project connects the Ambassador Bridge with I-75 in 2009**

Summary of Impacts with DRIC

No Impacts on:

- **Wetlands**
- **Water Quality**
- **Threatened and Endangered Species**

Summary of Impacts with DRIC

- **New jobs**
- **Local traffic patterns changed**
- **Improved air quality**
- **Proposed noise walls**
- **Potential revitalization**



Possible Community Enhancements



What is the DRIC's U.S. Cost?

- **The U.S. part of this cost is between \$1.28 billion to \$1.49 billion (with inflation) which includes:**
 - ✓ Property Acquisition
 - ✓ Interchange with I-75
 - ✓ Plaza
 - ✓ Half of bridge

Comment Period

- **Now through
April 29, 2008**

**Your
input
is vital !**

**The Detroit River International Border Crossing
Comment Form**

The Michigan Department of Transportation (MDOT) is sponsoring the Detroit River International Corridor Study in southeastern Michigan. The Environmental Study Phase of the project involves stakeholders and the public through several rounds of meetings over the period ending in 2007. The purpose of the Detroit River International Corridor Study is to provide safe, efficient and secure movement of people and goods across the Canadian/US border on the Detroit River area to support the economies of Michigan, Ontario, Canada, and the US; and 2) to support the mobility needs of natural and civil defense.

GET INVOLVED!
A series of meetings will be held during this study. If you would like to receive notice of future meetings, and have not already received a mailing, please give us your name and address.

*** PLEASE PRINT CLEARLY *** **Your name will be held confidential**

Name _____
Address _____
City / ZIP _____
Email _____

How did you learn of this meeting? (Check One) Newspaper Mailer Word of mouth
 Radio Television Other _____ Specify _____

TELL US WHAT YOU THINK
We want to know what you think the issues are that affect your area. Is there an issue we should address? Anything you have to say is important. Use the space below and on the back. Or, call 1-800-960-2949.
Leave a message or add your name to the mailing list, if you have not already done so.

Detroit River International Crossing

Thank you



Detroit River International Crossing

Questions/Comments



- Identify end-to-end TEPA – Spring 2008
- Complete environmental assessment studies – U.S. - Sept. 2008
Canada - Dec. 2008
- Obtain approvals – anticipated timeframes: U.S. - end of 2008
Canada - mid-2009