

DETROIT RIVER INTERNATIONAL CROSSING ENVIRONMENTAL ASSESSMENT

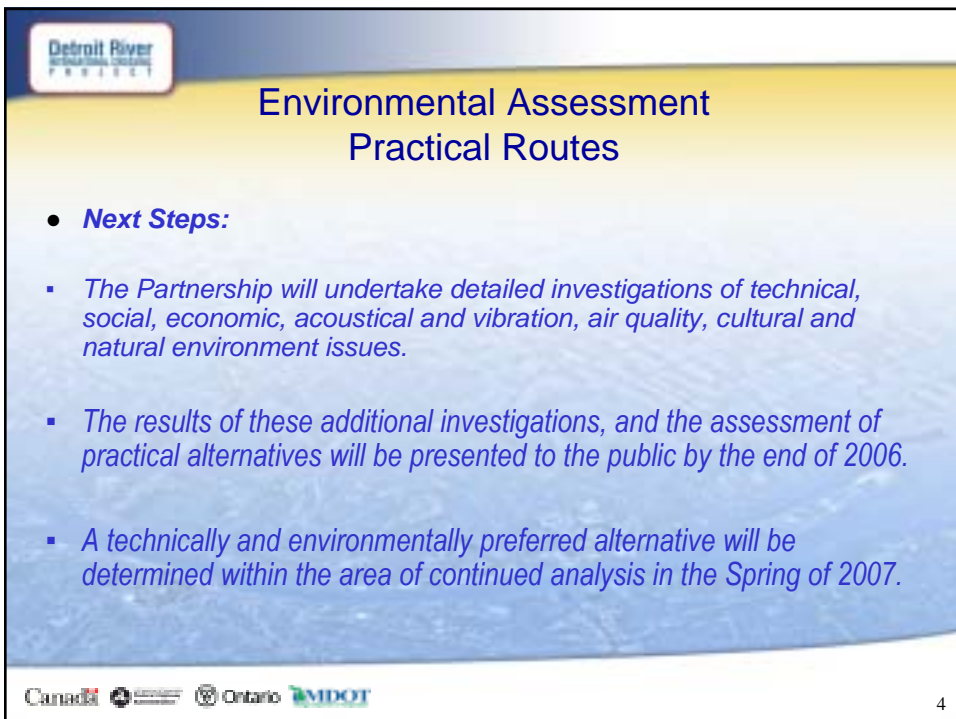
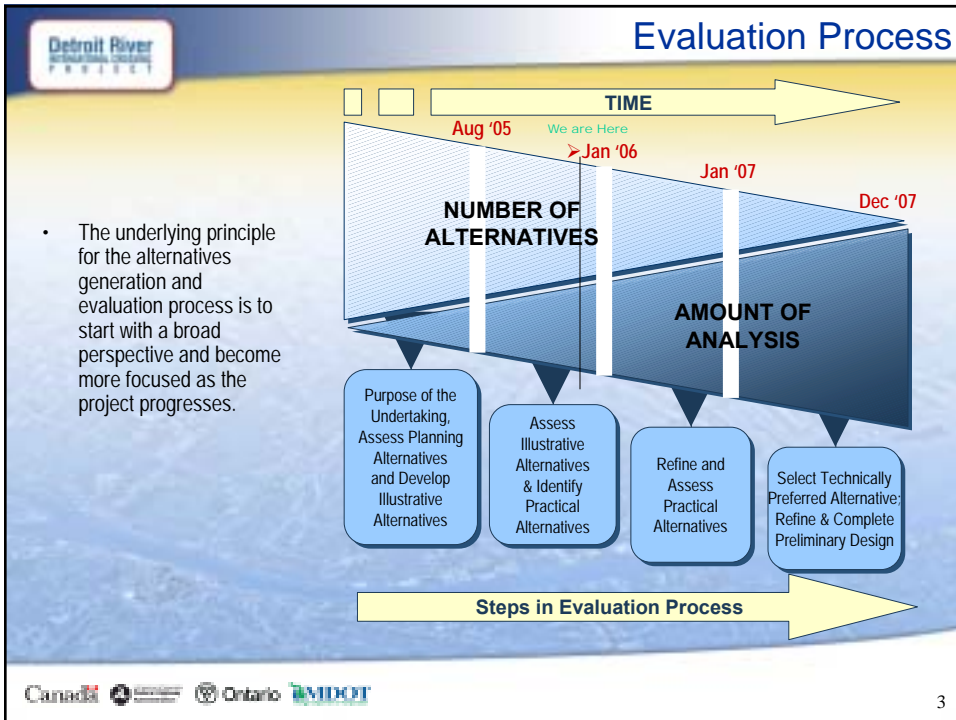
Practical Routes Environmental Component

December 2005

DETROIT RIVER INTERNATIONAL CROSSING Environmental Assessment

Results of Initial Work Plan Review

- *Agency Comments*
- *Municipality Comments*
- *Public and Stakeholder Comments*



Environmental Assessment Practical Route Investigations

Technical:

- *Conduct Geotechnical Surveys*
- *Develop Preliminary Geometric Design*
- *Consult with Municipalities, Agencies, and Stakeholders*
- *Develop Geometric Design Mitigation Strategies*

Acoustical and Vibration:

- *Site Surveys*
- *Consult with Agencies and Stakeholders*
- *Conduct Practical Routes Noise Assessment*
- *Develop Noise Mitigation Strategies*

Air Quality:

- *Site Surveys*
- *Consult with Agencies and Stakeholders*
- *Conduct Practical Routes Air Quality Assessment*
- *Present Results of Air Quality Assessment*

Environmental Assessment Practical Route Investigations

Waste and Waste Management

- *Field Surveys – i.e. sites*
- *Consult with Agencies and Stakeholders*
- *Develop Waste Management Strategies*

Archaeological:

- *Prepare Stage One Documentary Survey*
- *Consult with Agencies, First Nations and Stakeholders*
- *Conduct Stage Two Field Surveys at specific locations*
- *Develop Mitigation Strategies*

Built Heritage:

- *Conduct Built Heritage Inventories*
- *Consult with Agencies, The Community and Stakeholders*
- *Develop Mitigation Strategies*

Environmental Assessment Practical Route Investigations

Economic:

- *Conduct Individual Business Interviews*
- *Consultation with Business Associations/Groups*

Social:

- *Conduct Individual Household Interviews*
- *Consultation with Community Associations/Groups*

Natural Heritage:

- *Field Surveys – i.e. fisheries, migratory birds, and vegetation*
- *Conduct Effects Assessment*
- *Consult with Agencies and Stakeholders*
- *Develop Mitigation Strategies*

Key Milestones

Study Area Features, Opportunities & Constraints	April '05	•Introduce study process to Agencies; establish primary contacts
Initial Set of Crossing Alternatives & Connecting Routes in Canada and the U.S. (Illustrative Alternatives)	June '05	•Agencies review and approve DRIC Work Plans
Practical Alternatives (Area of Continued Analysis)	December '05	•Agencies review & comment on development and evaluation of Illustrative Alternatives; •Agencies identify environmental protection and mitigation requirements
Social, Economic, Environmental and Engineering Assessments	Winter - Summer '06 (Seasonal)	•Agencies review & comment on evaluation of Practical Alternatives
Preferred Crossing Location & Connecting Routes in Canada and the U.S.	Spring '07	•Agencies comment on environmental protection & mitigation in principle for preferred alternative
Finalize Engineering and Mitigation Measures	Summer '07	•Agencies review draft study documents (OEA and CEAA Screening Reports)
Document Study and Submit for Approvals	End of '07	Submission of final EA documents, including draft permits in principle