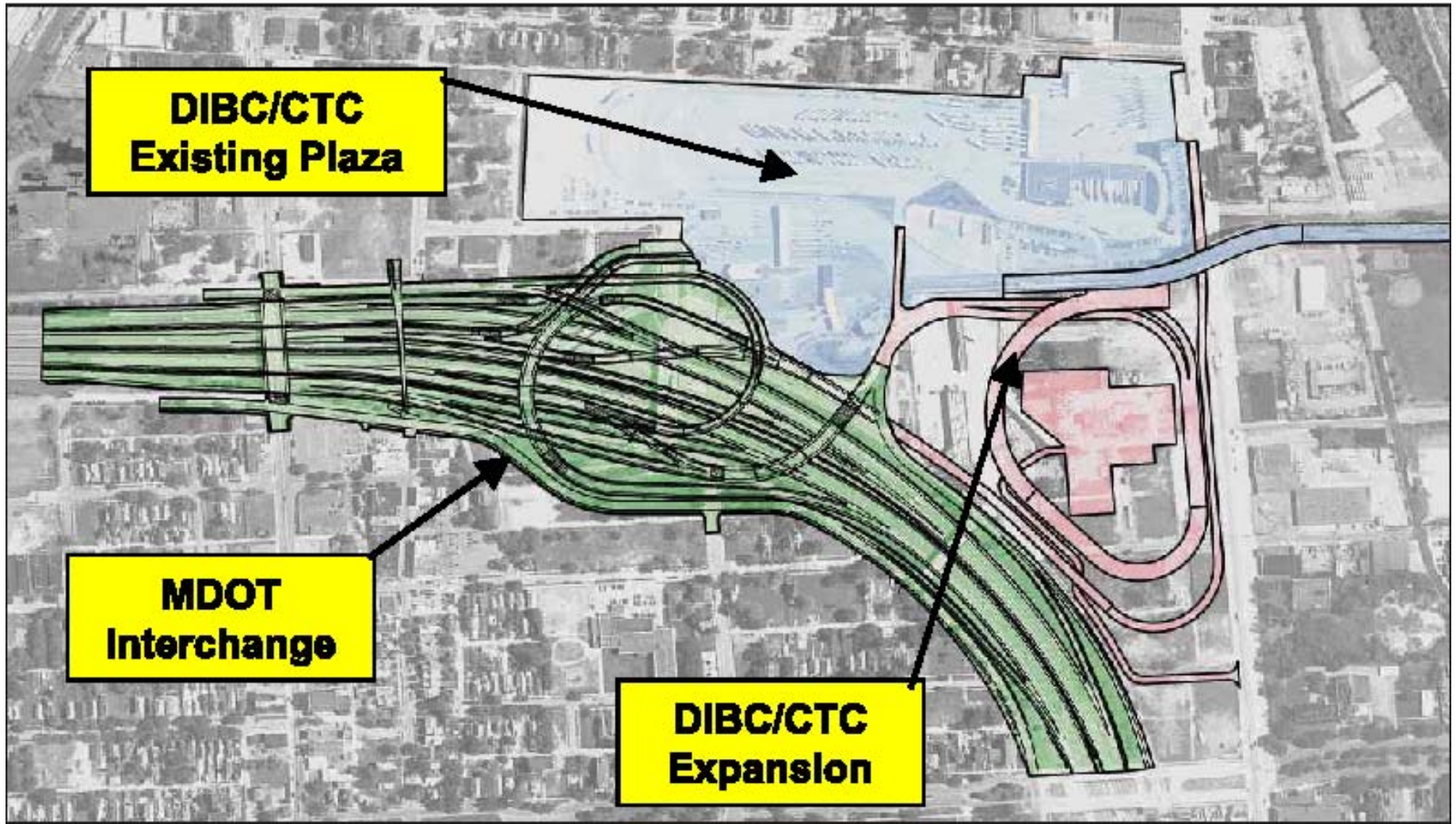


AMBASSADOR



AMBASSADOR BRIDGE





**DIBC/CTC
Existing Plaza**

**MDOT
Interchange**

**DIBC/CTC
Expansion**



Completed Project



Ste. Anne Church

Detroit River

Fort St.

W. Grand Blvd.

Welcome Center

21st St.

24th St.

Lambie Pl.

Mercado

23rd St.

Bagley St.

West Mexicantown

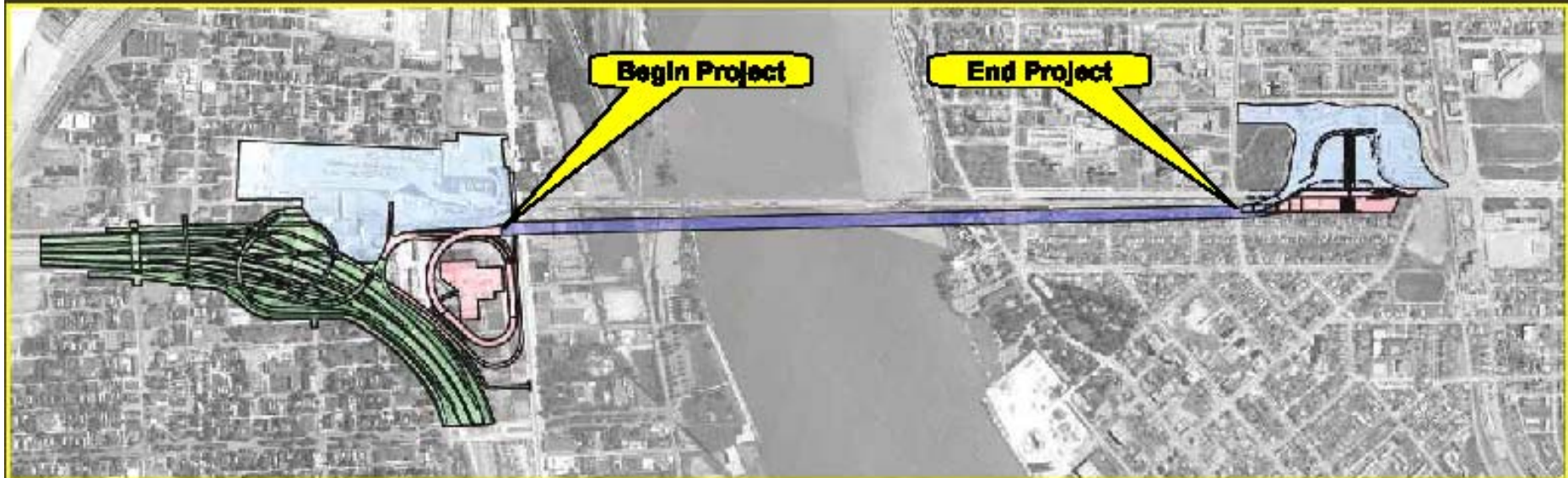
Vernor Hwy.

I-75



North

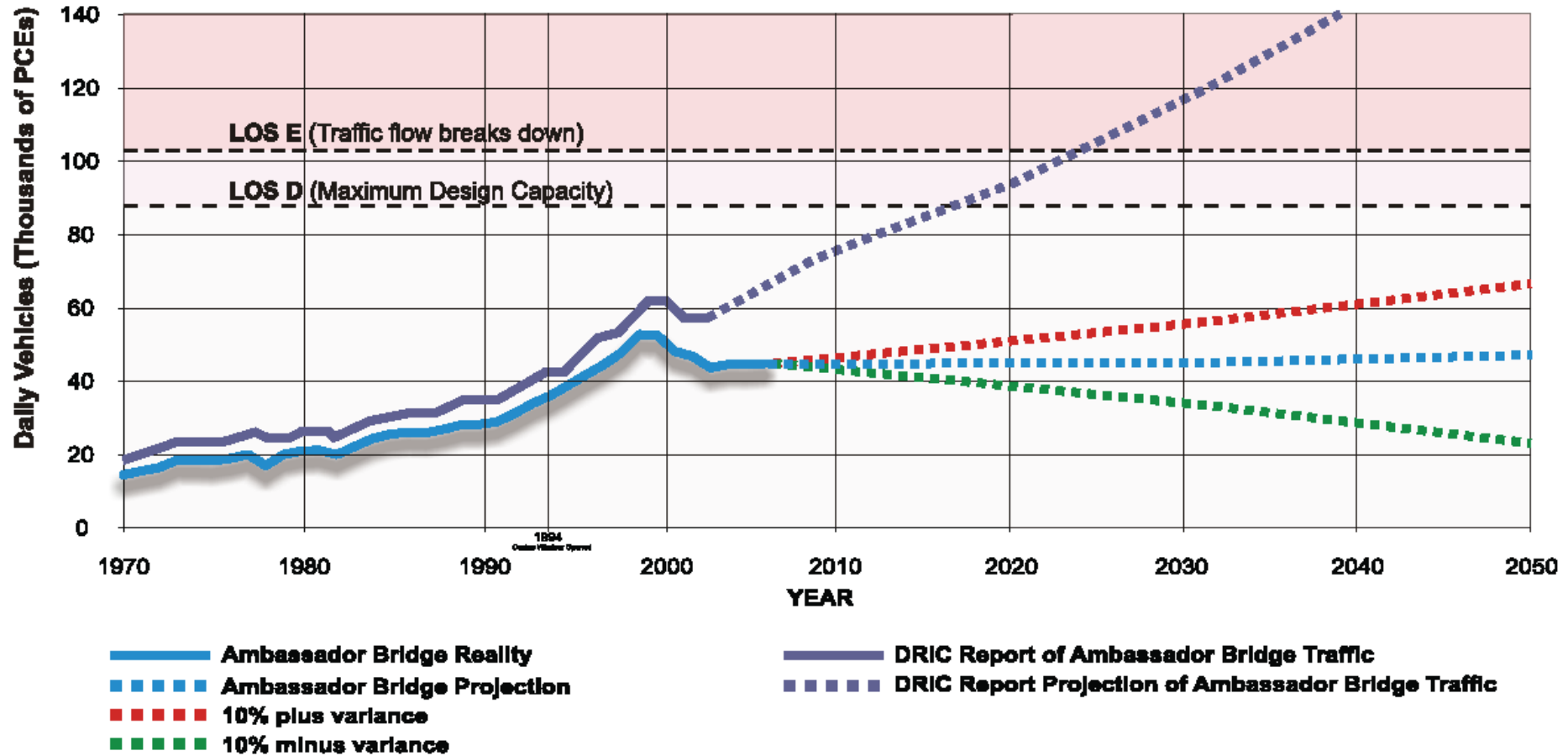
Bridge Enhancement Project



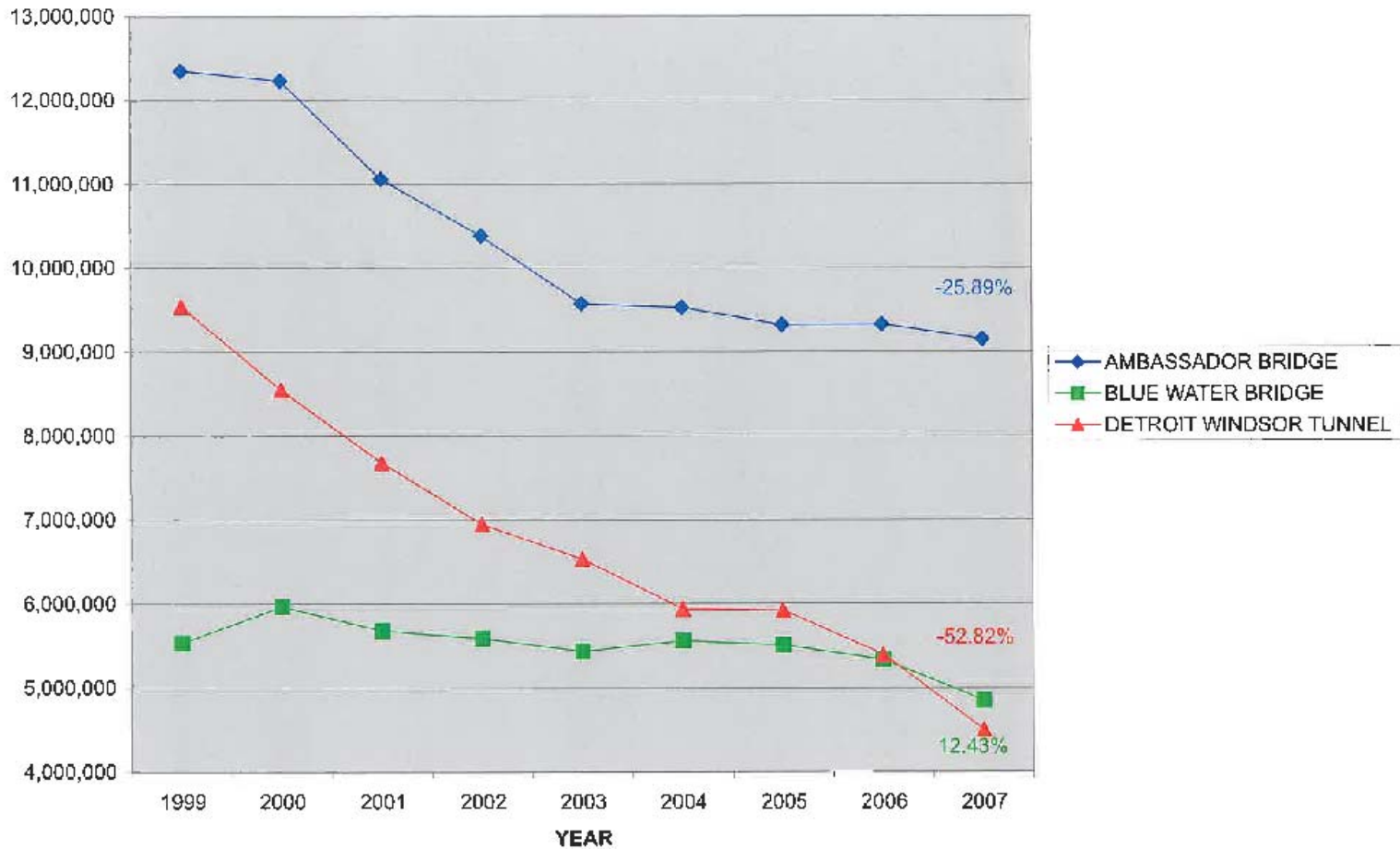
- A cable stayed **structure will be constructed adjacent** to the existing bridge
- The new structure will continue to **provide adequate lanes** sufficient to accommodate the traffic flow already approved in the plaza expansions underway



DRIC Report versus AMBASSADOR BRIDGE Actual



AUTOMOBILE AND TRUCK COMBINED TOTALS 1999 THROUGH 2007

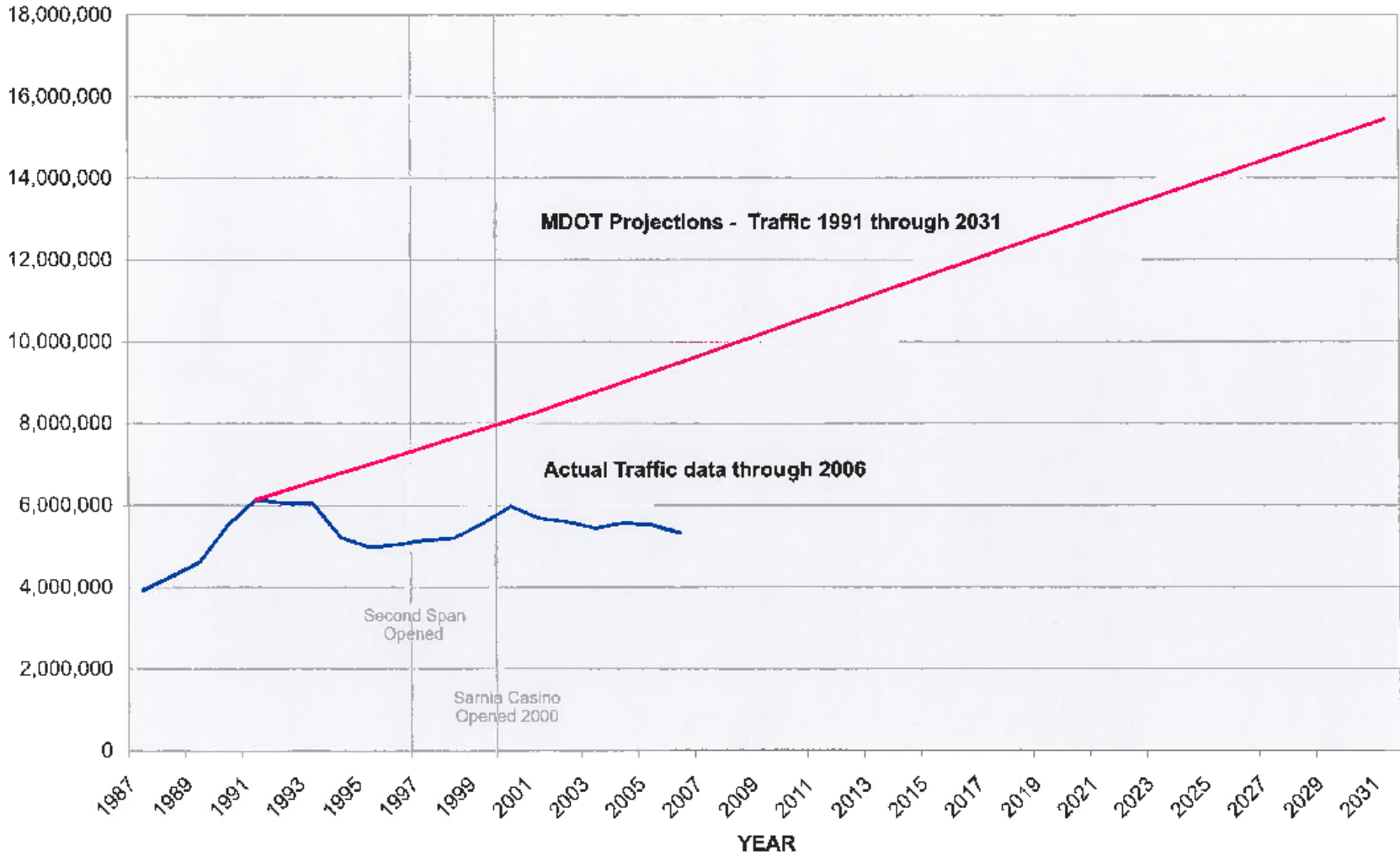


Note 1: The Samia Casino opened in 2000 resulting in the Blue Water Bridge traffic remaining relatively constant.

Note 2: The Blue Water Bridge Second Span opened in 1997.

Note 3: November and December 2006 were estimated based upon the average change of the first 10 months between 2005 and 2006.

BLUE WATER BRIDGE TRAFFIC VOLUME



Source: MDOT Projections - Blue Water Bridge Additional Capacity Project Environmental Report, June 1994.
Actual Traffic - BTOA monthly reports of all crossings



Detroit Windsor Tunnel

ABC Processing Center
(Privately Funded-2006)

Ambassador Bridge, Windsor, ON, Canada

© 2007 Tele Atlas
Image © 2007 Ambassador Bridge
© 2007 Europa Technologies
Image © 2007 TerraMetrics
Streaming 100%

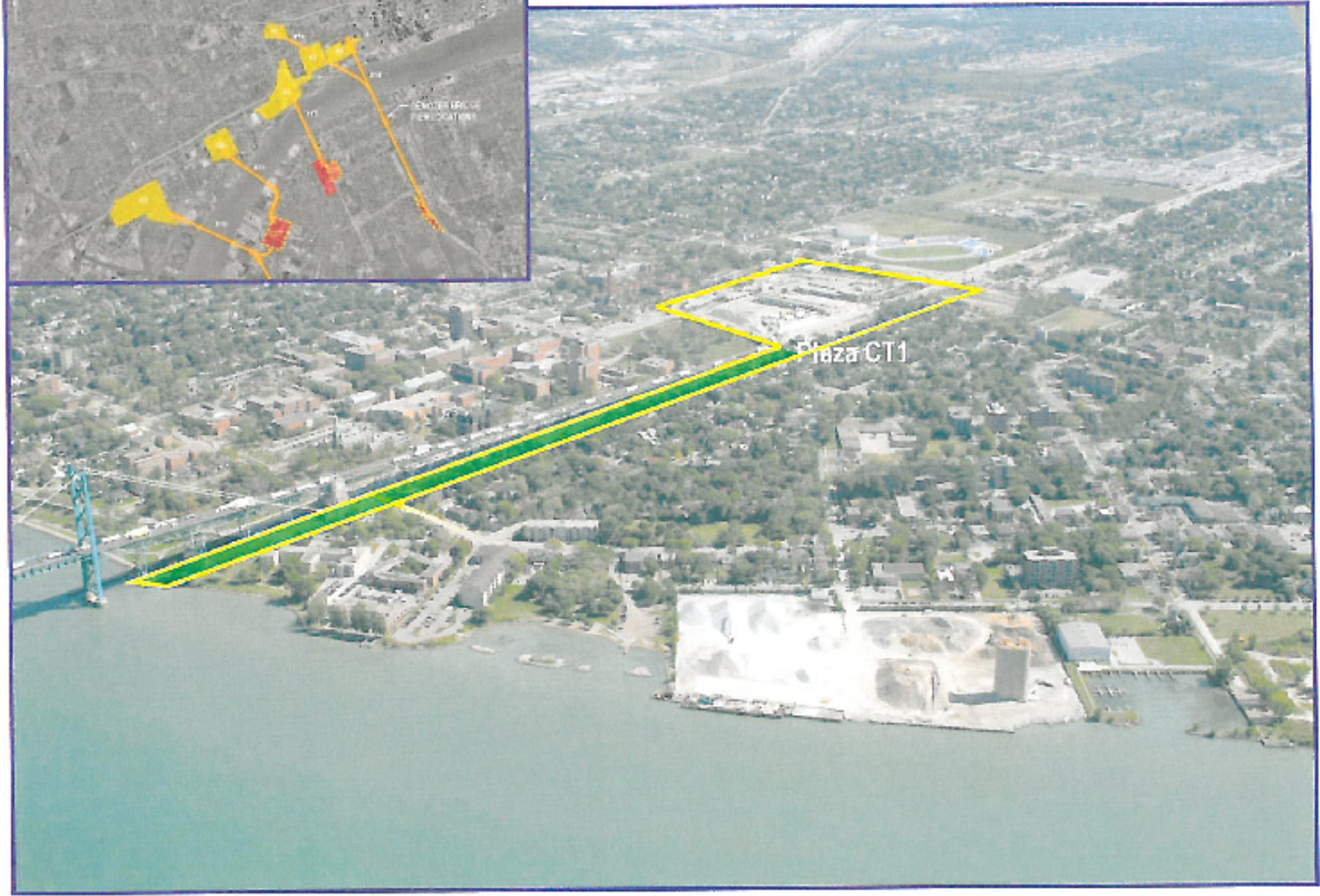
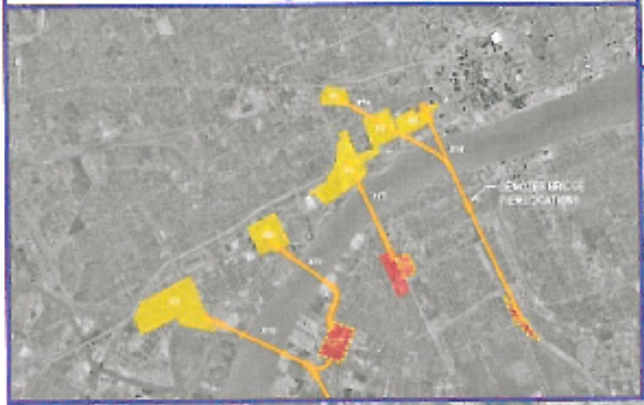
© 2007 Google
Zug Island
Eye Ball 32026 ft

Point: 42°16'47.54" N 83°01'28.00" W

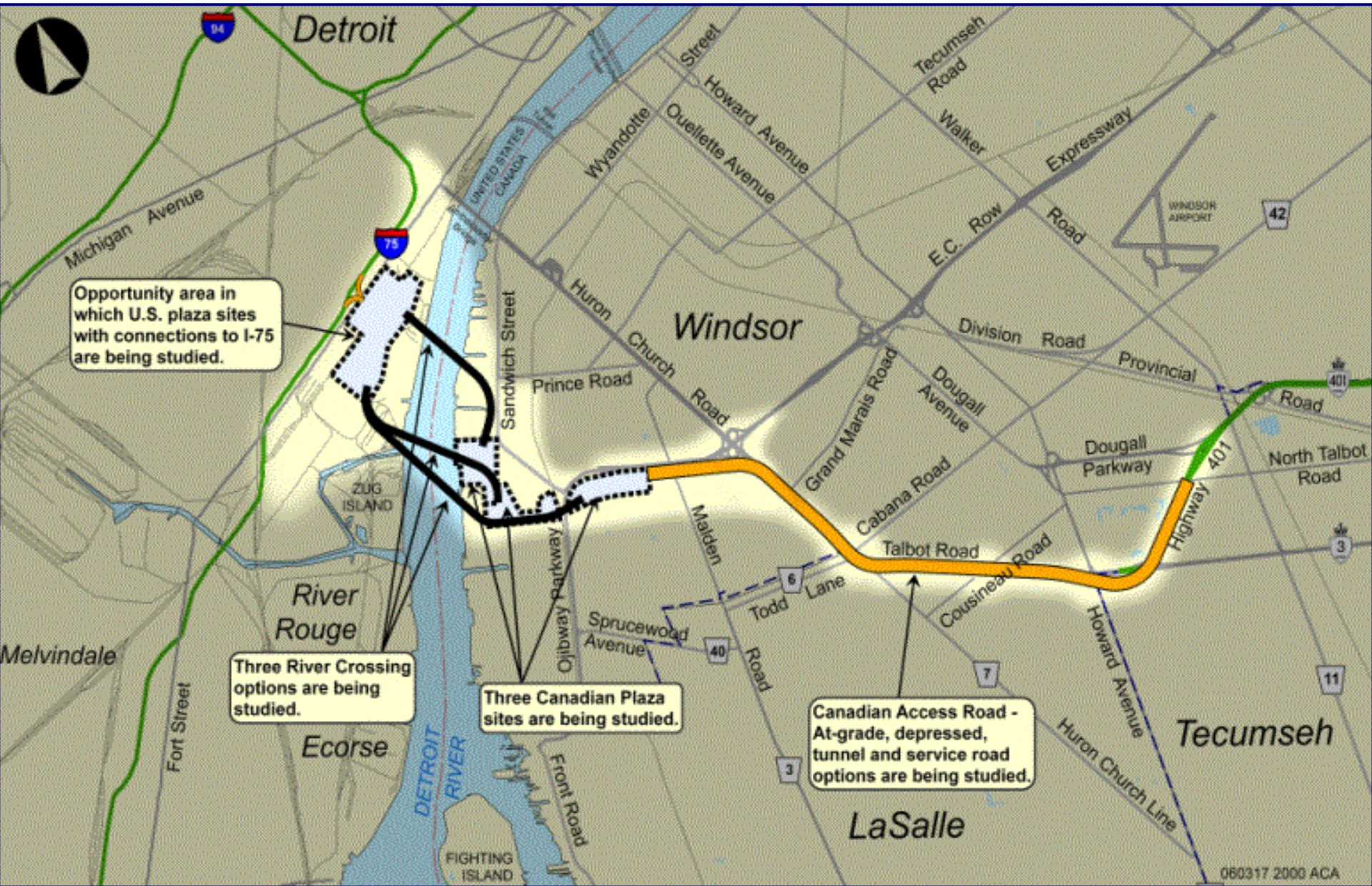
Detroit River International Crossing Study
River Crossings X-10 through X-14



Detroit River International Crossing Study
River Crossings X-10 through X-14

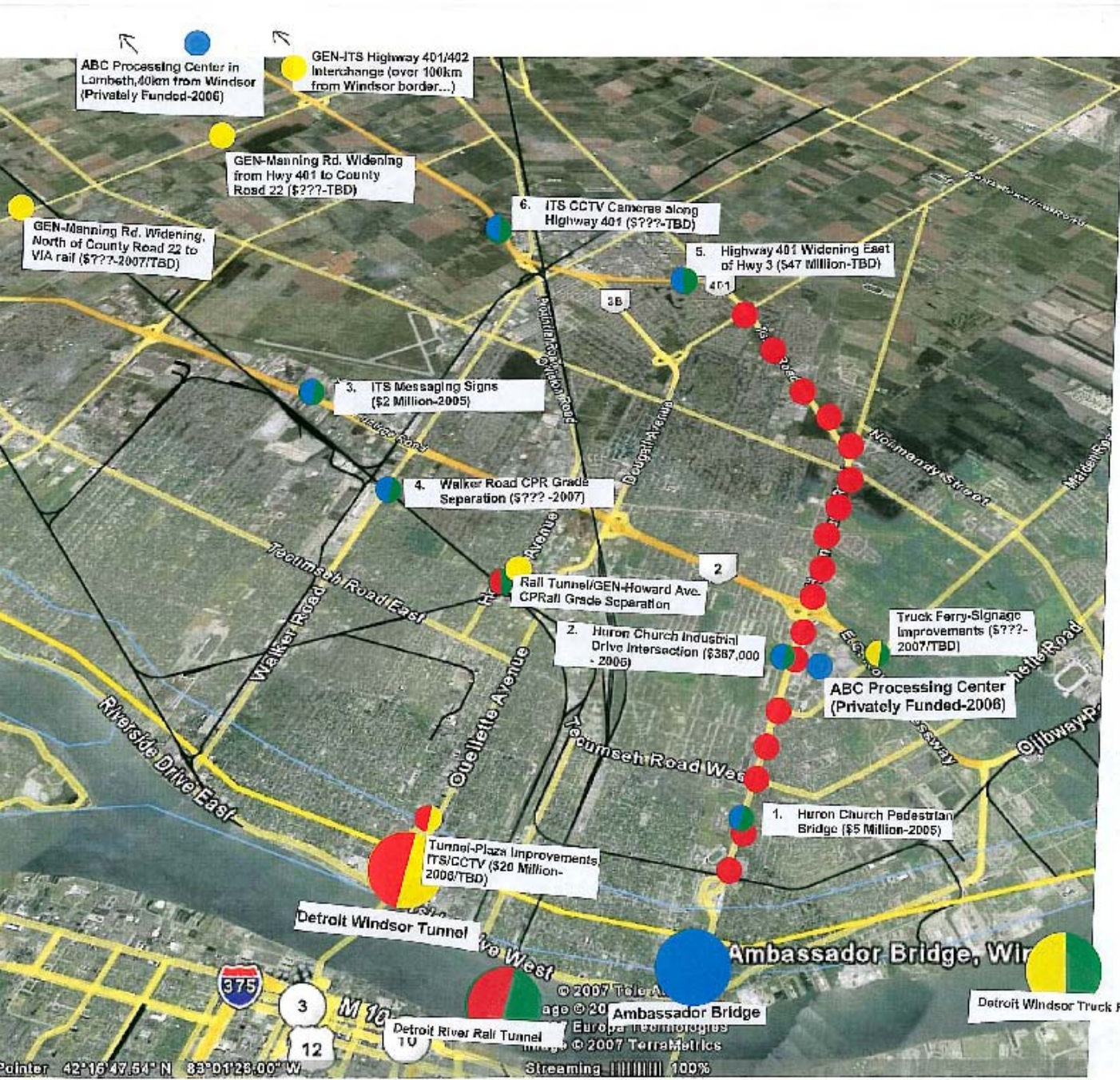


Practical Crossing, Plaza & Route Alternatives



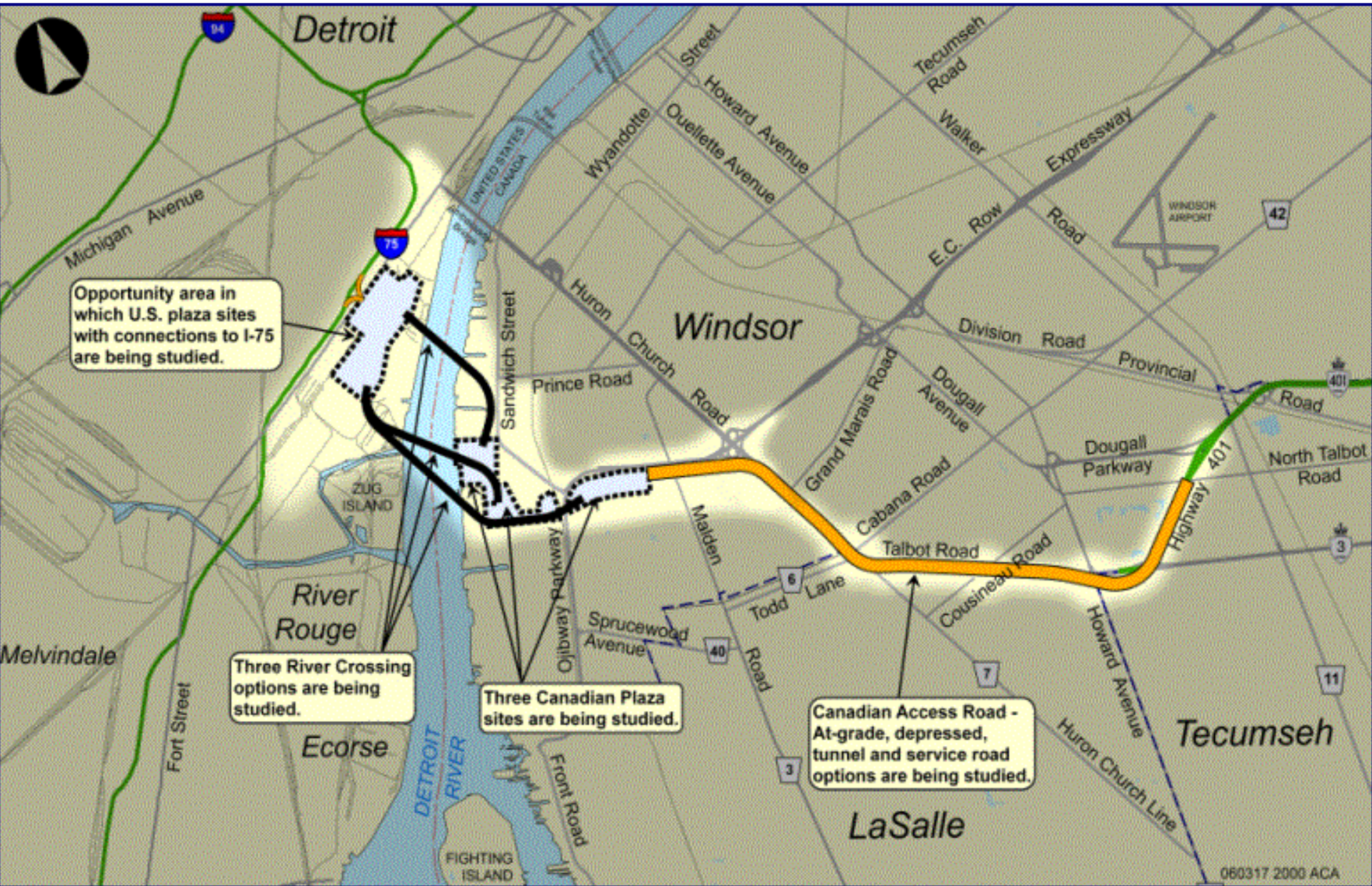






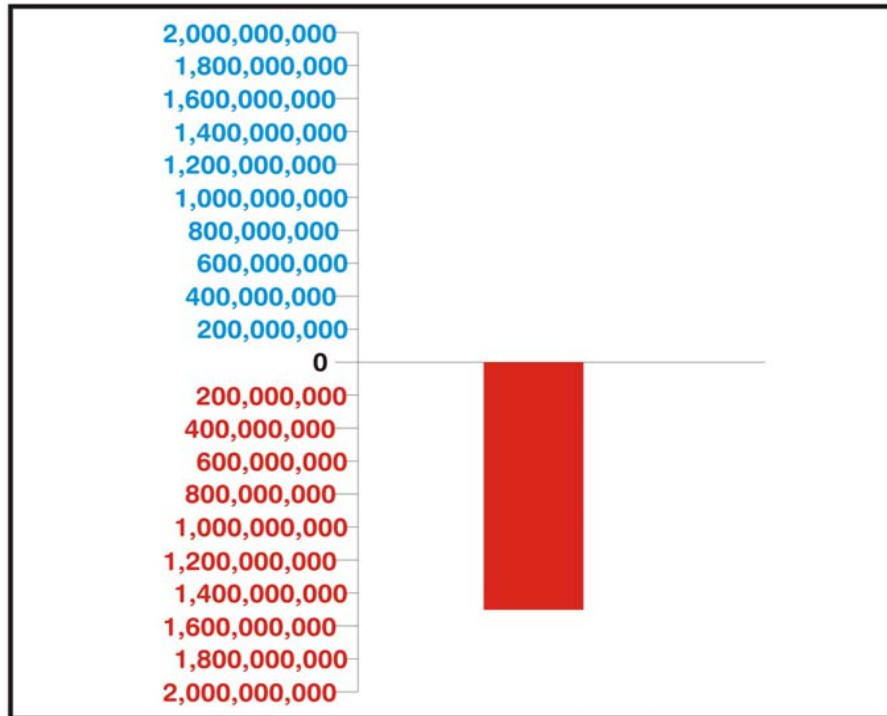
-  **Ambassador Bridge (?)**
 1. Huron Church Pedestrian Bridge (\$5 Million-2005)
 2. Huron Church Industrial Drive Intersection (\$387,000 - 2006)
 3. ITS Messaging Signs (\$2 Million-2005)
 4. Walker Road CPR Grade Separation (\$???-2007/TBD)
 5. Highway 401 Widening East of Hwy 3 (\$47 Million-TBD)
 6. ITS CCTV Cameras along Highway 401 (\$???-TBD)
 7. Truck Marshalling Yard (\$???-TBD)
- 17 Stop Lights - Not Addressed... 
-  ABC Processing Centers (Windsor & Lambeth - Privately Funded-2006)
-  **Detroit River Rail Tunnel**
Rail Tunnel - Howard Ave. CP Rail Grade Separation (\$???-TBD)
-  **Detroit Windsor Truck Ferry**
Truck Ferry-Signage Improvements (\$???-2007/TBD)
-  **Detroit-Windsor Tunnel**
Tunnel-Plaza Improvements; (\$20 Million-2006/TBD)
Tunnel-ITS/CCTV (\$???-TBD)
-  **General Improvements (Border?)**
GEN-Manning Rd. Widening, North of County Road 22 to VIA rail (\$???-2007/TBD)
GEN-Manning Rd. Widening from Hwy 401 to County Road 22 (\$???-TBD)
GEN-Howard Ave. CP Rail Grade Separation (duplicate of Rail Tunnel)
GEN-ITS Highway 401/402 Interchange (over 100km from Windsor border...)

Practical Crossing, Plaza & Route Alternatives



DRIC's Premise

Spend
\$1.5 Billion of
taxpayer dollars



Reality:

**Ambassador
Bridge invests**
\$400 Million
private dollars

